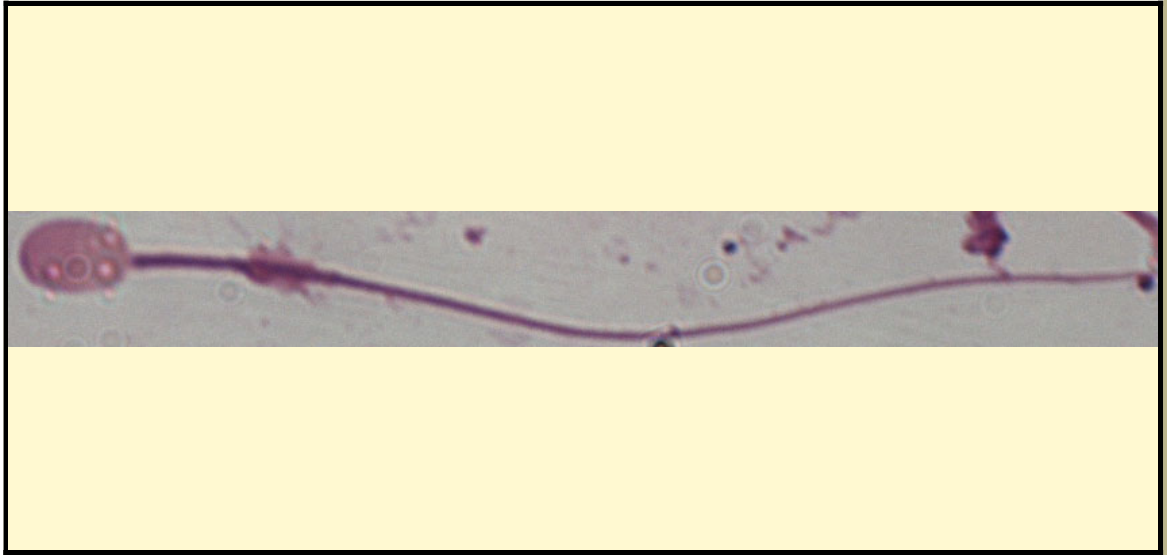


SAN DIEGO ZOO INSTITUTE FOR CONSERVATION RESEARCH
REPRODUCTIVE PHYSIOLOGY DIVISION
SPERM ATLAS

COMMON NAME

Angolan Roan Antelope

PICTURE



* Pictures are not to scale * All Photos are property of the San Diego Zoo except those credited in the notes

CLASS

Mammalia

RP NUMBER

ORDER

Artiodactyla

STAIN

Giemsa

SUBORDER

HEAD SHAPE

Oval

FAMILY

Bovidae

ANIMAL PICTURE

SUBFAMILY

GENUS

Hippotragus



SPECIES

Hippotragus equinus cottoni

SUBSPECIES

MEASUREMENTS (μm)

Head Length

6.00

Head Width

4.00

Midpiece Length

20.00

Tail Length

38.00

Measure Total

64.00

NOTES

thawed sperm , therefore there is background material and some artifact bubbles