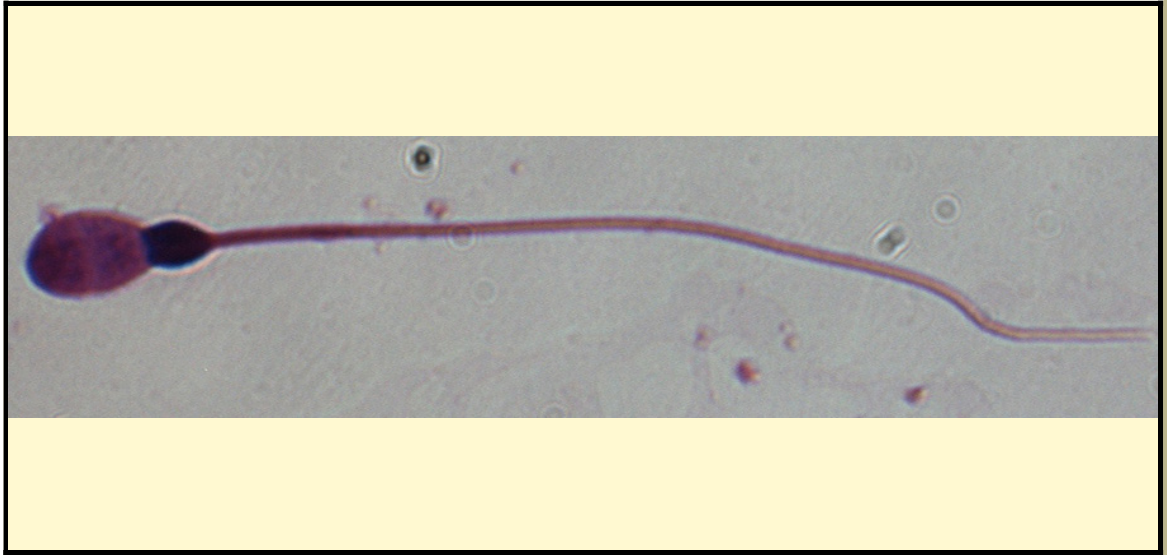


SAN DIEGO ZOO INSTITUTE FOR CONSERVATION RESEARCH  
REPRODUCTIVE PHYSIOLOGY DIVISION  
SPERM ATLAS

COMMON NAME

Royal Antelope

PICTURE



\* Pictures are not to scale \* All Photos are property of the San Diego Zoo except those credited in the notes

CLASS *Mammalia*

RP NUMBER 13-110

ORDER *Artiodactyla*

STAIN Giemsa

SUBORDER

HEAD SHAPE Oval

FAMILY *Bovidae*

SUBFAMILY

GENUS *Neotragus*

ANIMAL PICTURE

SPECIES *Neotragus pygmaeus*



SUBSPECIES

MEASUREMENTS ( $\mu\text{m}$ )

Head Length 6.00

Head Width 4.00

Midpiece Length 13.00

Tail Length 41.00

Measure Total 60.00

NOTES

the sperm was epididymal therefore there is a cytoplasmic droplet present