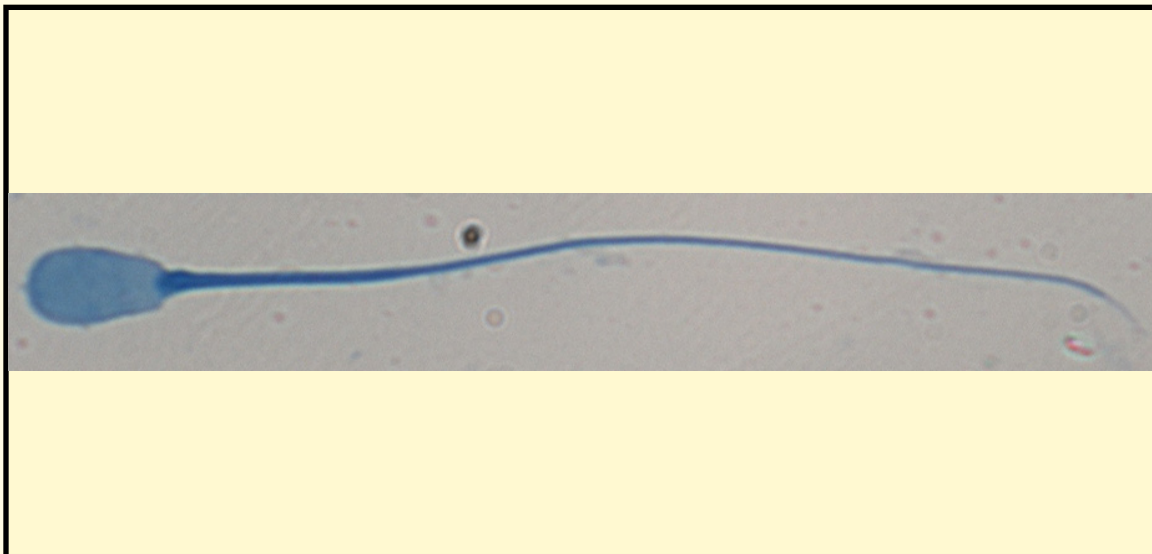


SAN DIEGO ZOO INSTITUTE FOR CONSERVATION RESEARCH  
REPRODUCTIVE PHYSIOLOGY DIVISION  
SPERM ATLAS

COMMON NAME

Calamian Deer

PICTURE



\* Pictures are not to scale \* All Photos are property of the San Diego Zoo except those credited in the notes

CLASS

Mammalia

RP NUMBER

11-045

ORDER

Artiodactyla

STAIN

Coomassie

SUBORDER

Ruminantia

HEAD SHAPE

Paddle

FAMILY

Cervidae

SUBFAMILY

Cervinae

GENUS

Axis

ANIMAL PICTURE

SPECIES

*Axis calamianensis*

SUBSPECIES

MEASUREMENTS ( $\mu\text{m}$ )

Head Length

7.90

Head Width

3.90

Midpiece Length

11.40

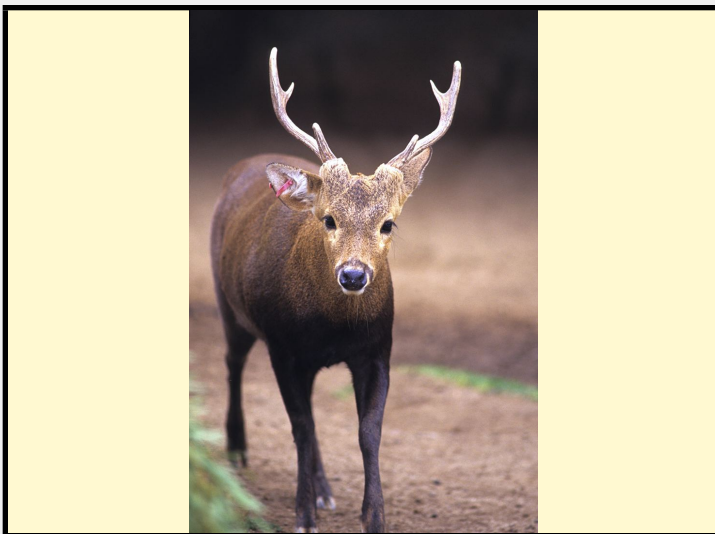
Tail Length

40.90

Measure Total

60.20

NOTES



Empty text box for additional notes or observations.