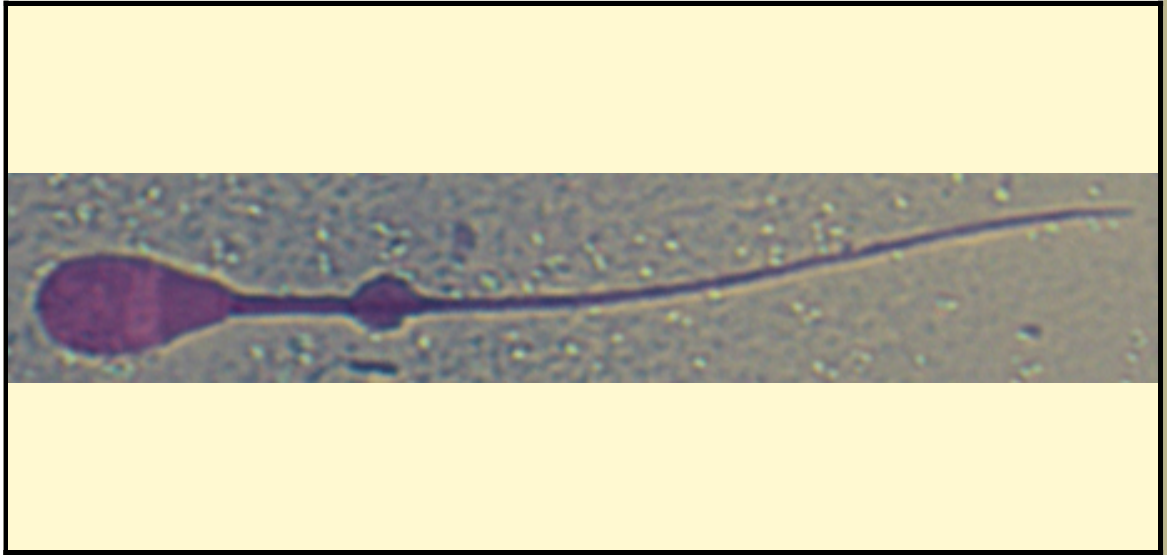


SAN DIEGO ZOO INSTITUTE FOR CONSERVATION RESEARCH  
REPRODUCTIVE PHYSIOLOGY DIVISION  
SPERM ATLAS

COMMON NAME

Western Tufted Deer

PICTURE



\* Pictures are not to scale \* All Photos are property of the San Diego Zoo except those credited in the notes

CLASS

Mammalia

RP NUMBER

15-021

ORDER

Artiodactyla

STAIN

Pope

SUBORDER

HEAD SHAPE

Paddle

FAMILY

Cervidae

SUBFAMILY

ANIMAL PICTURE

GENUS

*Elaphodus*

SPECIES

*Elaphodus cephalophus*

SUBSPECIES



MEASUREMENTS ( $\mu\text{m}$ )

Head Length

11.00

Head Width

5.00

Midpiece Length

9.00

Tail Length

41.00

Measure Total

61.00

NOTES

the sperm was epididymal therefore there is a cytoplasmic droplet present