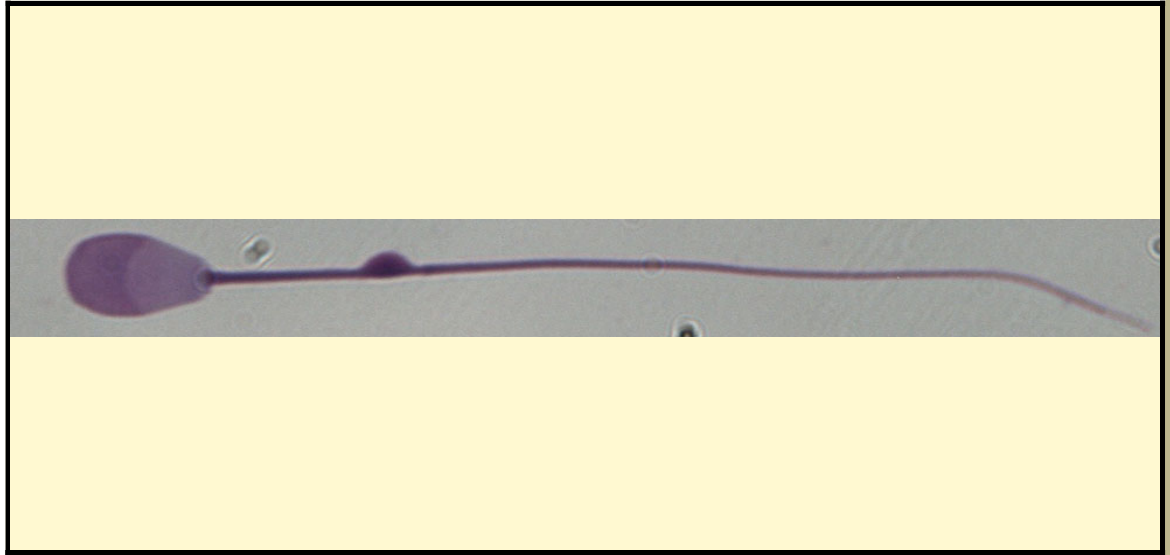


SAN DIEGO ZOO INSTITUTE FOR CONSERVATION RESEARCH
REPRODUCTIVE PHYSIOLOGY DIVISION
SPERM ATLAS

COMMON NAME

White-lipped deer

PICTURE



* Pictures are not to scale * All Photos are property of the San Diego Zoo except those credited in the notes

CLASS

Mammalia

RP NUMBER

10-013

ORDER

Artiodactyla

STAIN

Giemsa

SUBORDER

HEAD SHAPE

Paddle

FAMILY

Cervidae

ANIMAL PICTURE

SUBFAMILY

Cervinae

GENUS

Cervus

SPECIES

Przewalskium albirostris

SUBSPECIES

MEASUREMENTS (μm)

Head Length

8.00

Head Width

4.00

Midpiece Length

12.00

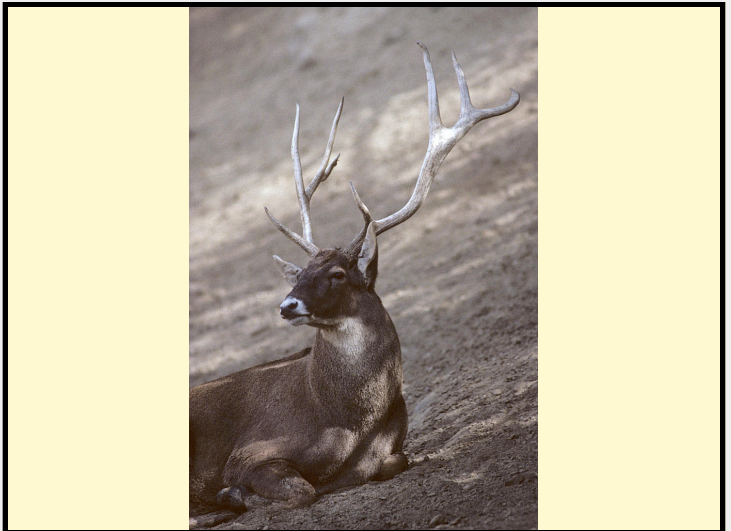
Tail Length

44.00

Measure Total

64.00

NOTES



the sperm was epididymal therefore there is a cytoplasmic droplet present