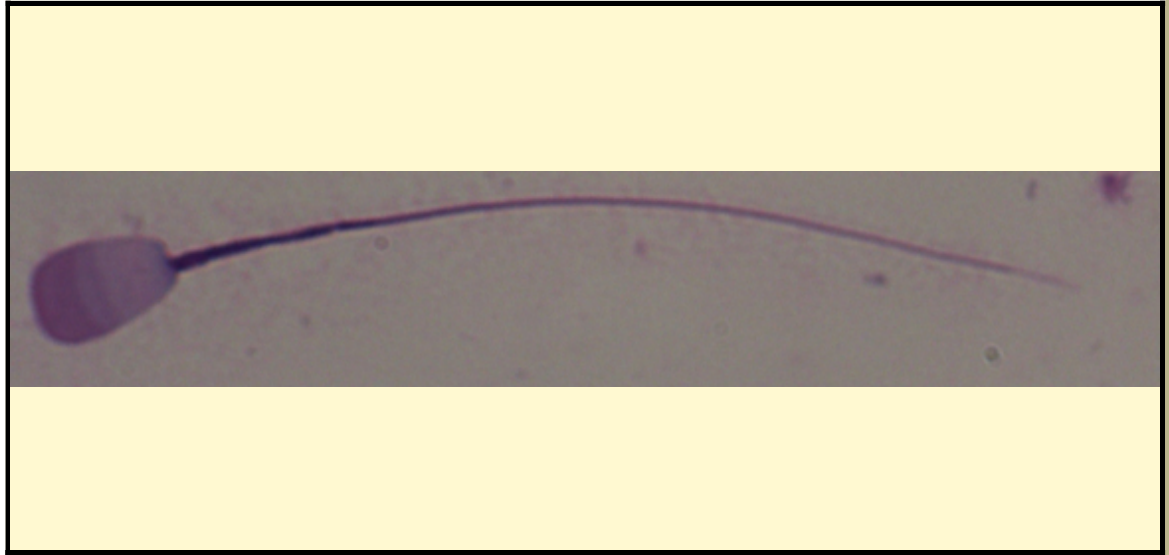


SAN DIEGO ZOO INSTITUTE FOR CONSERVATION RESEARCH  
REPRODUCTIVE PHYSIOLOGY DIVISION  
SPERM ATLAS

COMMON NAME

Thomson's Gazelle

PICTURE



\* Pictures are not to scale \* All Photos are property of the San Diego Zoo except those credited in the notes

CLASS

Mammalia

RP NUMBER

15-127

ORDER

Artiodactyla

STAIN

Giemsa

SUBORDER

HEAD SHAPE

Paddle

FAMILY

Bovidae

ANIMAL PICTURE

SUBFAMILY

GENUS

*Eudorcas*

SPECIES

*Eudorcas thomsonii*

SUBSPECIES

MEASUREMENTS ( $\mu\text{m}$ )

Head Length

10.00

Head Width

6.50

Midpiece Length

15.00

Tail Length

50.00

Measure Total

75.00

NOTES

