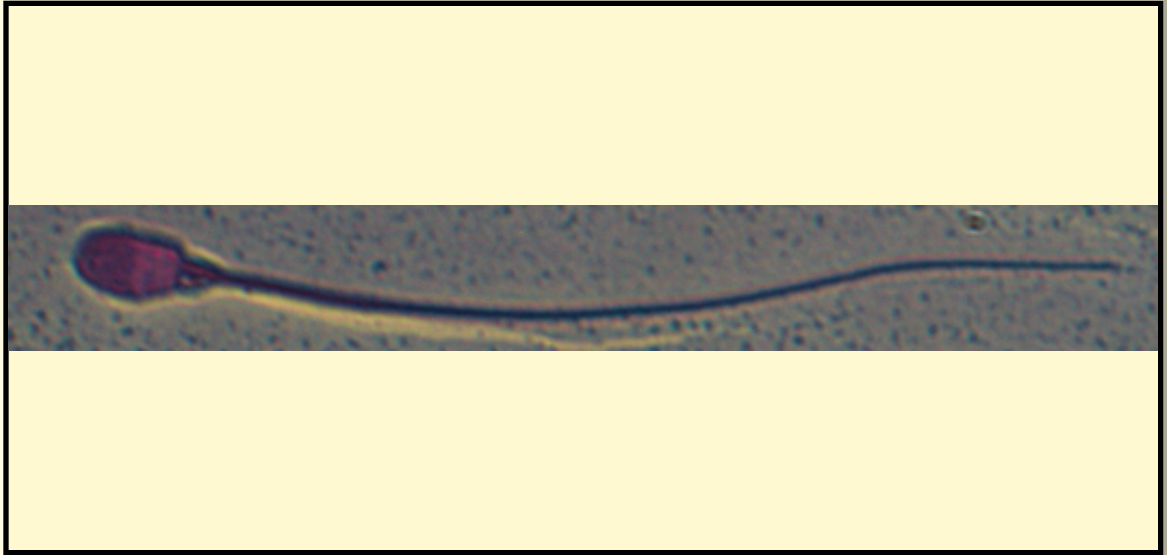


SAN DIEGO ZOO INSTITUTE FOR CONSERVATION RESEARCH  
REPRODUCTIVE PHYSIOLOGY DIVISION  
SPERM ATLAS

COMMON NAME

Central Chinese Goral

PICTURE



\* Pictures are not to scale \* All Photos are property of the San Diego Zoo except those credited in the notes

CLASS

Mammalia

RP NUMBER

05-036

ORDER

Artiodactyla

STAIN

Pope

SUBORDER

Ruminantia

HEAD SHAPE

Oval

FAMILY

Bovidae

SUBFAMILY

Caprinae

ANIMAL PICTURE

GENUS

Nemorhaedus

SPECIES

*N. goral*

SUBSPECIES

*N. goral arnouxianus*

MEASUREMENTS ( $\mu\text{m}$ )

Head Length

5.94

Head Width

3.65

Midpiece Length

14.79

Tail Length

36.17

Measure Total

56.90

NOTES

