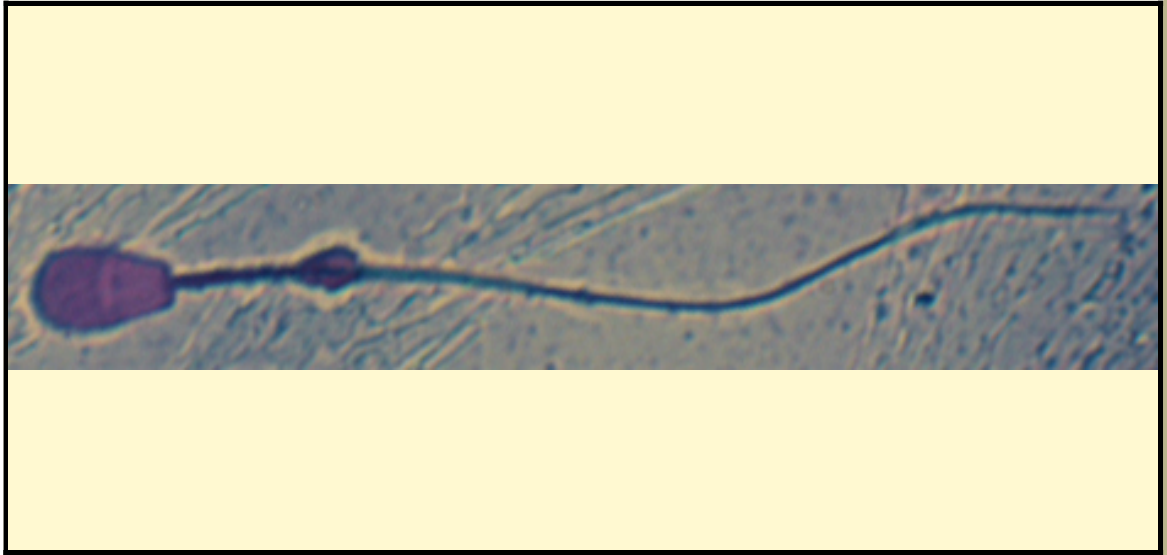


SAN DIEGO ZOO INSTITUTE FOR CONSERVATION RESEARCH  
REPRODUCTIVE PHYSIOLOGY DIVISION  
SPERM ATLAS

COMMON NAME

Zambesi Lechwe

PICTURE



\* Pictures are not to scale \* All Photos are property of the San Diego Zoo except those credited in the notes

CLASS

Mammalia

RP NUMBER

15-020

ORDER

Artiodactyla

STAIN

Pope

SUBORDER

HEAD SHAPE

Paddle

FAMILY

Bovidae

SUBFAMILY

GENUS

Kobus

ANIMAL PICTURE

SPECIES

*Kobus leche*

SUBSPECIES

MEASUREMENTS ( $\mu\text{m}$ )

Head Length

8.00

Head Width

5.00

Midpiece Length

11.00

Tail Length

43.00

Measure Total

62.00

NOTES



the sperm was epididymal therefore there is a cytoplasmic droplet present