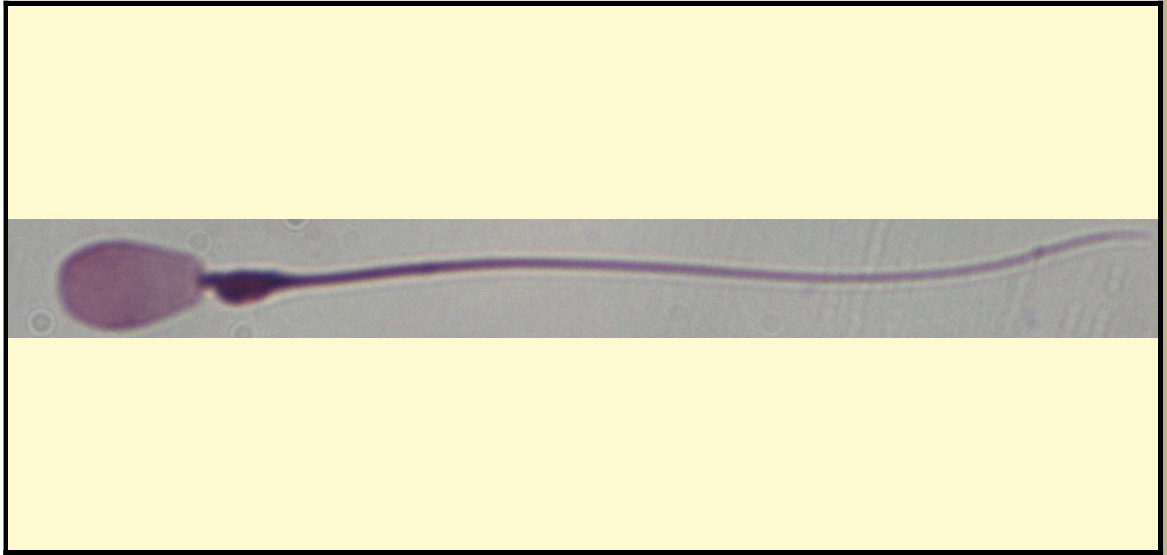


SAN DIEGO ZOO INSTITUTE FOR CONSERVATION RESEARCH  
REPRODUCTIVE PHYSIOLOGY DIVISION  
SPERM ATLAS

COMMON NAME

Indochinese Sika

PICTURE



\* Pictures are not to scale \* All Photos are property of the San Diego Zoo except those credited in the notes

CLASS

Mammalia

RP NUMBER

11-135

ORDER

Artiodactyla

STAIN

Giemsa

SUBORDER

HEAD SHAPE

Paddle

FAMILY

Cervidae

ANIMAL PICTURE

SUBFAMILY

Cervinae

GENUS

Cervus

SPECIES

*Cervus nippon pseudaxis*

SUBSPECIES

MEASUREMENTS ( $\mu\text{m}$ )

Head Length

7.00

Head Width

4.00

Midpiece Length

11.00

Tail Length

41.00

Measure Total

59.00

NOTES



the sperm was epididymal therefore there is a cytoplasmic droplet present