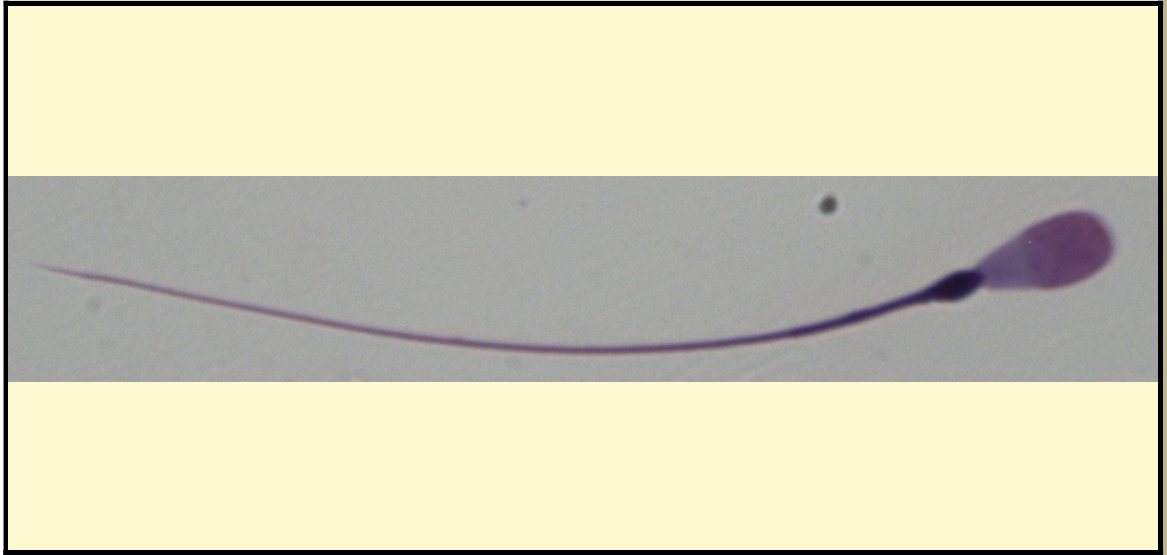


SAN DIEGO ZOO INSTITUTE FOR CONSERVATION RESEARCH  
REPRODUCTIVE PHYSIOLOGY DIVISION  
SPERM ATLAS

COMMON NAME

Burmese Thamin

PICTURE



\* Pictures are not to scale \* All Photos are property of the San Diego Zoo except those credited in the notes

CLASS

Mammalia

RP NUMBER

12-106

ORDER

Artiodactyla

STAIN

Giemsa

SUBORDER

HEAD SHAPE

Paddle

FAMILY

Cervidae

ANIMAL PICTURE

SUBFAMILY

Cervinae

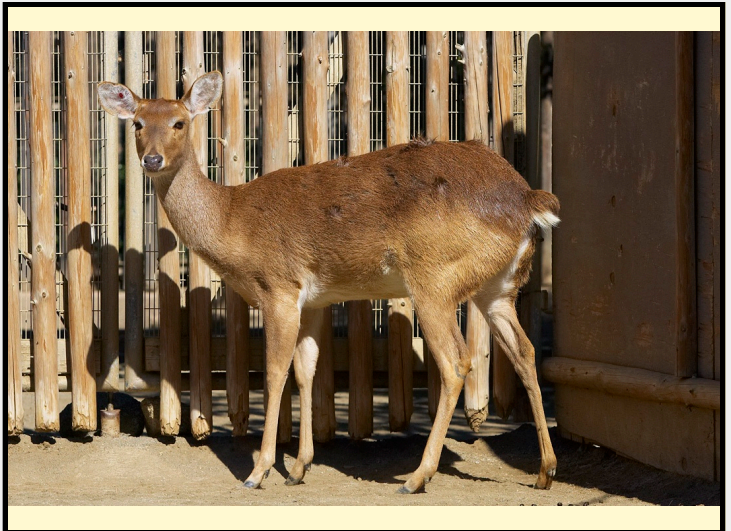
GENUS

cervus

SPECIES

*Rucervus eldii thamin*

SUBSPECIES



MEASUREMENTS ( $\mu\text{m}$ )

Head Length

7.96

Head Width

3.98

Midpiece Length

11.94

Tail Length

49.75

Measure Total

69.65

NOTES

Cytoplasmic droplet below sperm head due to the fact it is epididymal sperm