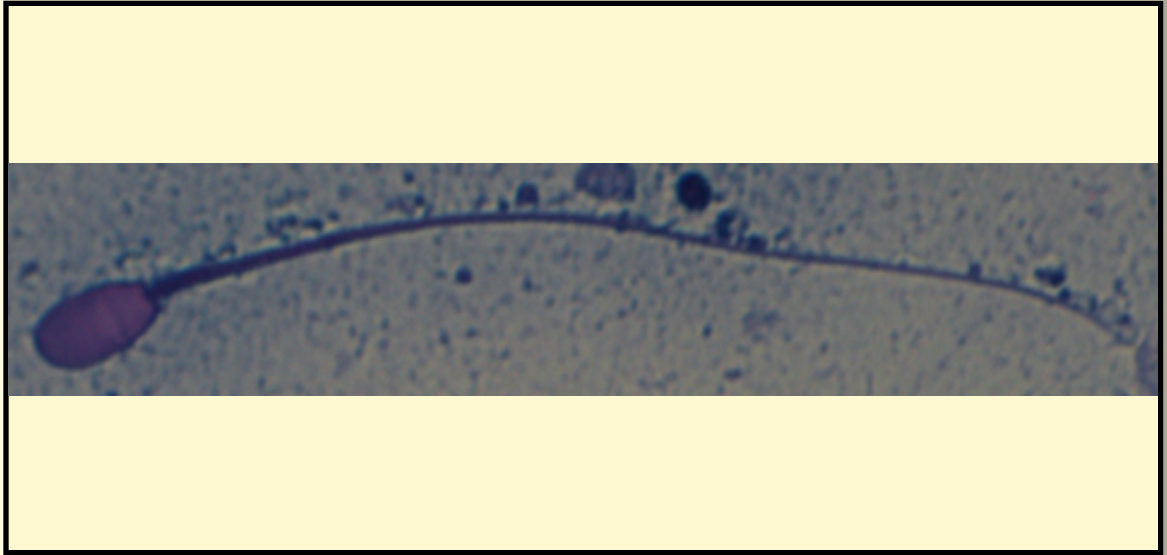


SAN DIEGO ZOO INSTITUTE FOR CONSERVATION RESEARCH
REPRODUCTIVE PHYSIOLOGY DIVISION
SPERM ATLAS

COMMON NAME

Ellipsen Waterbuck

PICTURE



* Pictures are not to scale * All Photos are property of the San Diego Zoo except those credited in the notes

CLASS

Mammalia

RP NUMBER

16-141

ORDER

Artiodactyla

STAIN

Pope

SUBORDER

HEAD SHAPE

Oval

FAMILY

Bovidae

ANIMAL PICTURE

SUBFAMILY

Reduncinae

GENUS

Kobus

SPECIES

Kobus ellipsiprymnus

SUBSPECIES

MEASUREMENTS (μm)

Head Length

7.00

Head Width

5.00

Midpiece Length

13.00

Tail Length

43.00

Measure Total

63.00

NOTES

