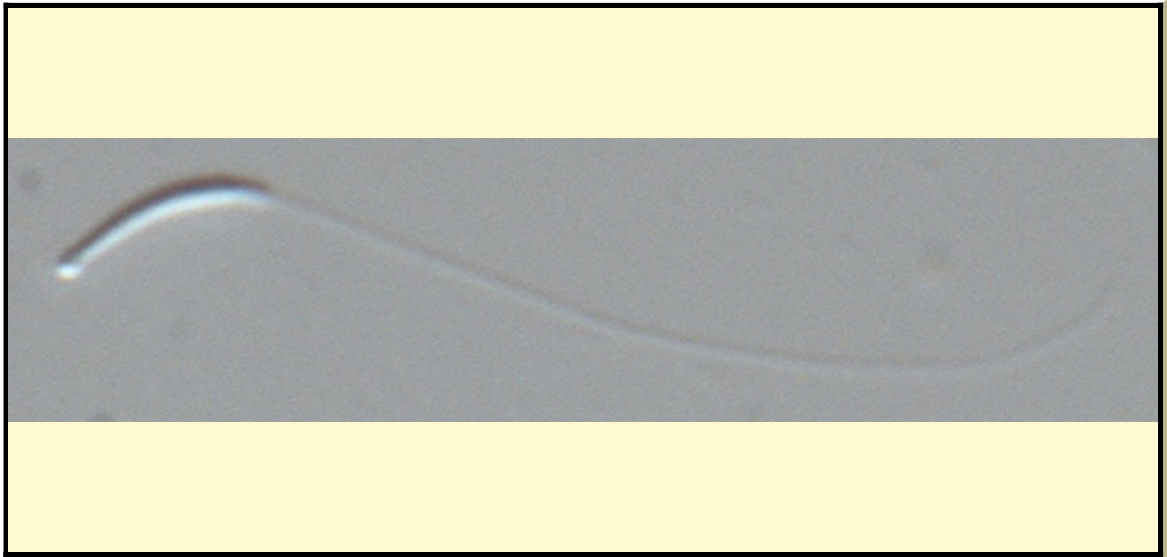


SAN DIEGO ZOO INSTITUTE FOR CONSERVATION RESEARCH
REPRODUCTIVE PHYSIOLOGY DIVISION
SPERM ATLAS

COMMON NAME

Red-Crowned Crane

PICTURE



* Pictures are not to scale * All Photos are property of the San Diego Zoo except those credited in the notes

CLASS

Aves

RP NUMBER

ORDER

Gruiformes

STAIN

None

SUBORDER

HEAD SHAPE

Filiformal

FAMILY

Gruidae

SUBFAMILY

GENUS

Grus

ANIMAL PICTURE

SPECIES

Grus japonensis

SUBSPECIES

MEASUREMENTS (μm)

Head Length

10.00

Head Width

1.00

Midpiece Length

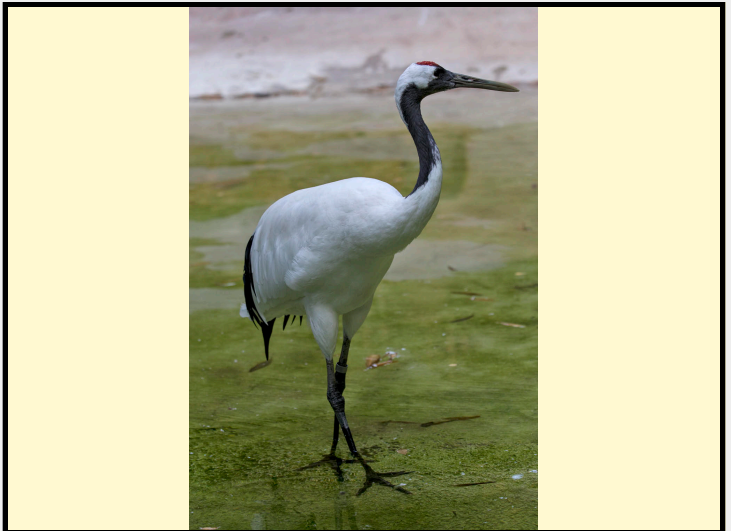
Tail Length

33.00

Measure Total

43.00

NOTES



Midpiece length could not be determined. Tail length measurement is both the midpiece and tail length combine.