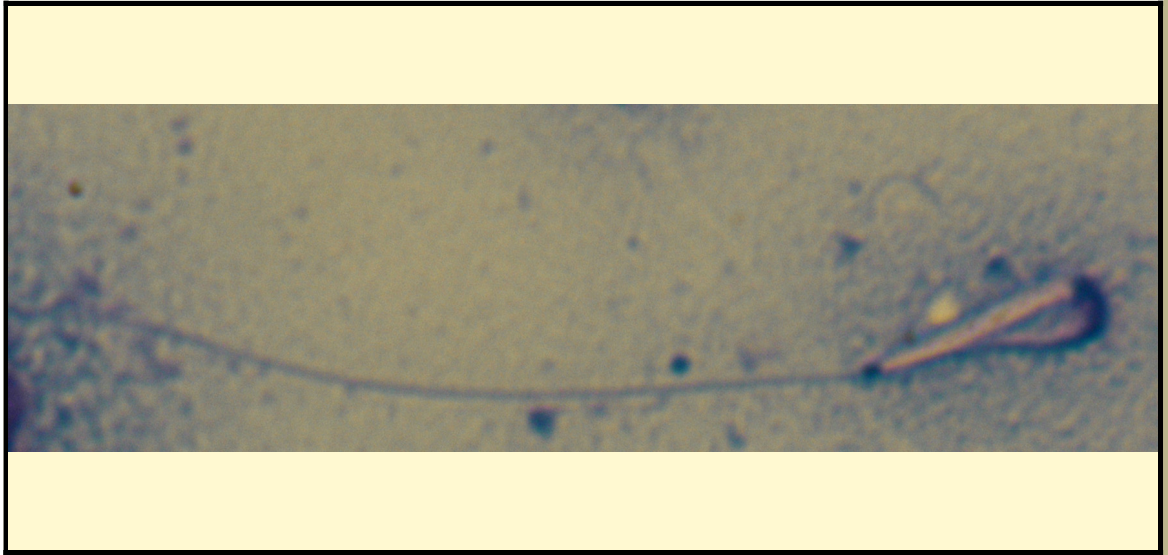


SAN DIEGO ZOO INSTITUTE FOR CONSERVATION RESEARCH
REPRODUCTIVE PHYSIOLOGY DIVISION
SPERM ATLAS

COMMON NAME

Roseate Spoonbill

PICTURE



* Pictures are not to scale * All Photos are property of the San Diego Zoo except those credited in the notes

CLASS

Aves

RP NUMBER

14-168

ORDER

Pelecaniformes

STAIN

Pope

SUBORDER

HEAD SHAPE

Filiformal

FAMILY

Thresionnithidae

ANIMAL PICTURE

SUBFAMILY

GENUS

Platalea

SPECIES

Platalea ajaja

SUBSPECIES

MEASUREMENTS (μm)

Head Length

10.00

Head Width

1.50

Midpiece Length

7.00

Tail Length

67.00

Measure Total

NOTES



abnormal morphology as head was bent back on tail