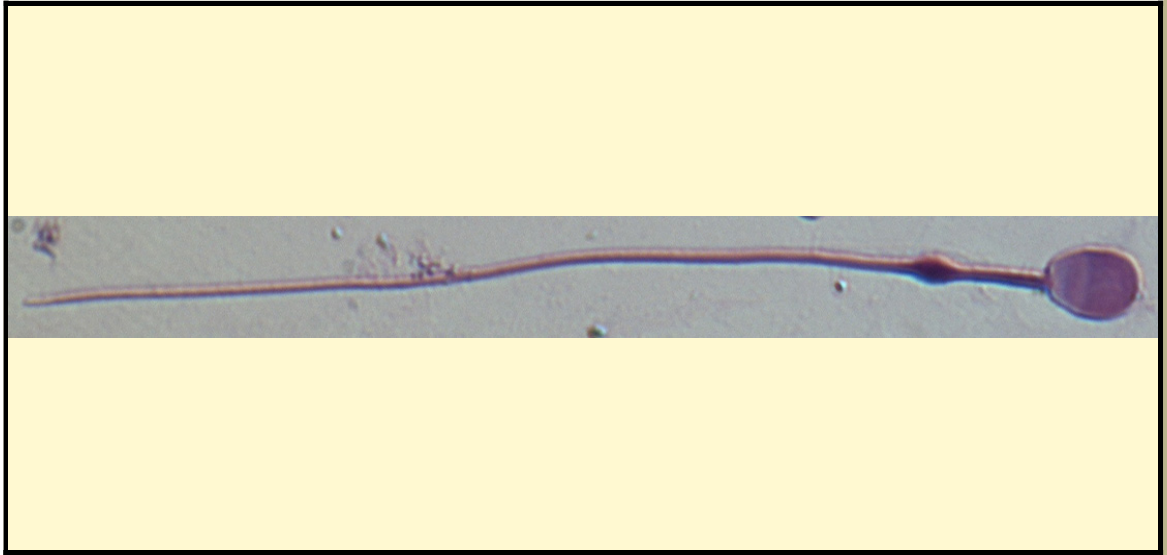


SAN DIEGO ZOO INSTITUTE FOR CONSERVATION RESEARCH
REPRODUCTIVE PHYSIOLOGY DIVISION
SPERM ATLAS

COMMON NAME

Manchurian Brown Bear

PICTURE



* Pictures are not to scale * All Photos are property of the San Diego Zoo except those credited in the notes

CLASS

Mammalia

RP NUMBER

13-196

ORDER

Carnivora

STAIN

Giemsa

SUBORDER

HEAD SHAPE

Round

FAMILY

Ursidae

ANIMAL PICTURE

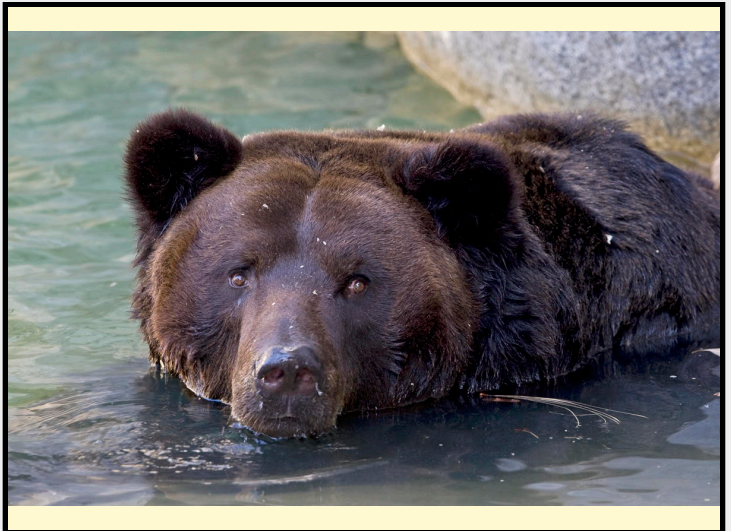
SUBFAMILY

GENUS

Ursus

SPECIES

Ursus arctos lasiotus



SUBSPECIES

MEASUREMENTS (μm)

Head Length

7.00

Head Width

5.00

Midpiece Length

10.00

Tail Length

49.00

Measure Total

66.00

NOTES

the sperm was epididymal therefore there is a cytoplasmic droplet present