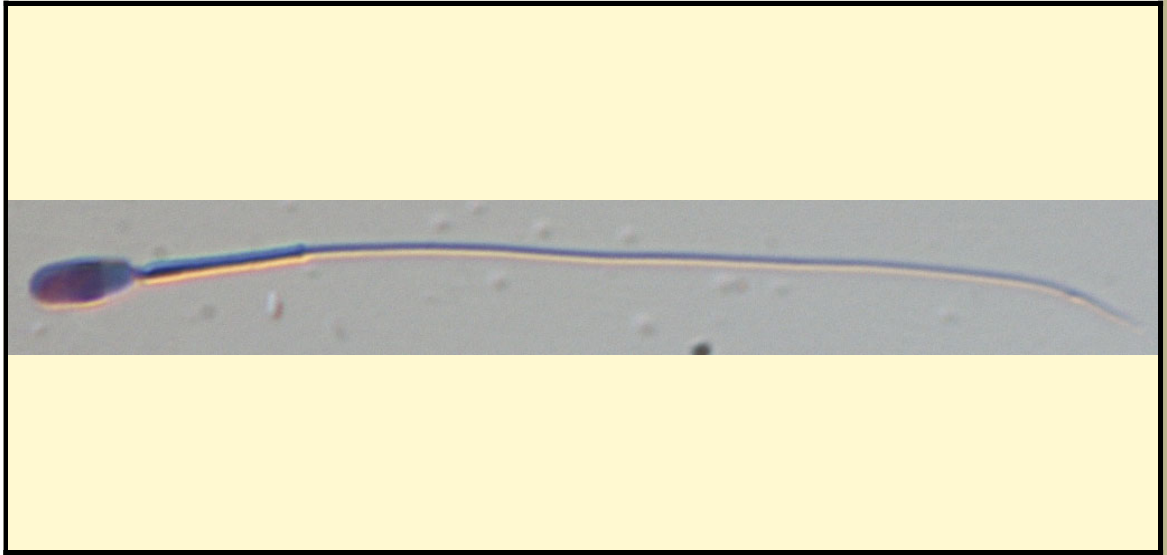


SAN DIEGO ZOO INSTITUTE FOR CONSERVATION RESEARCH
REPRODUCTIVE PHYSIOLOGY DIVISION
SPERM ATLAS

COMMON NAME

Domestic Cat

PICTURE



* Pictures are not to scale * All Photos are property of the San Diego Zoo except those credited in the notes

CLASS

Mammalia

RP NUMBER

ORDER

Carnivora

STAIN

Giemsa

SUBORDER

HEAD SHAPE

Oval

FAMILY

Felidae

ANIMAL PICTURE

SUBFAMILY

GENUS

Felis



SPECIES

Felis catus

SUBSPECIES

MEASUREMENTS (μm)

Head Length

5.00

Head Width

2.00

Midpiece Length

8.00

Tail Length

40.00

Measure Total

53.00

NOTES

Animal photo credit: Jennifer Barfield