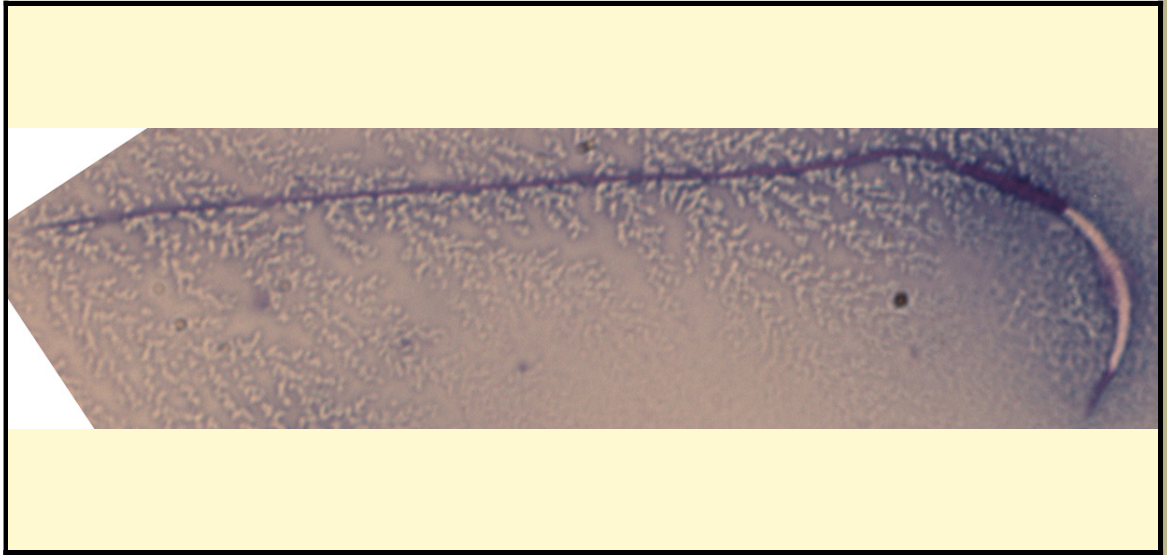


SAN DIEGO ZOO INSTITUTE FOR CONSERVATION RESEARCH  
REPRODUCTIVE PHYSIOLOGY DIVISION  
SPERM ATLAS

COMMON NAME

Green Anole

PICTURE



\* Pictures are not to scale \* All Photos are property of the San Diego Zoo except those credited in the notes

CLASS *Reptilia*

RP NUMBER 13-071

ORDER *Squamata*

STAIN Pope

SUBORDER *Iguania*

HEAD SHAPE Filiformal

FAMILY *Polychrotidae*

SUBFAMILY

GENUS *Anolis*

ANIMAL PICTURE

SPECIES *Anolis carolinensis*



SUBSPECIES

MEASUREMENTS ( $\mu\text{m}$ )

Head Length 14.00

Head Width 1.25

Midpiece Length 10.00

Tail Length 56.00

Measure Total 80.00

NOTES

Sperm was retrieved from the testicle and therefore has a cytoplasmic droplet.  
Animal Photo Credit: [http://upload.wikimedia.org/wikipedia/commons/thumb/e/e0/Green\\_Anole\\_-\\_Florida\\_Botanical\\_Gardens.jpg/512px-Green\\_Anole\\_-\\_Florida\\_Botanical\\_Gardens.jpg](http://upload.wikimedia.org/wikipedia/commons/thumb/e/e0/Green_Anole_-_Florida_Botanical_Gardens.jpg/512px-Green_Anole_-_Florida_Botanical_Gardens.jpg)