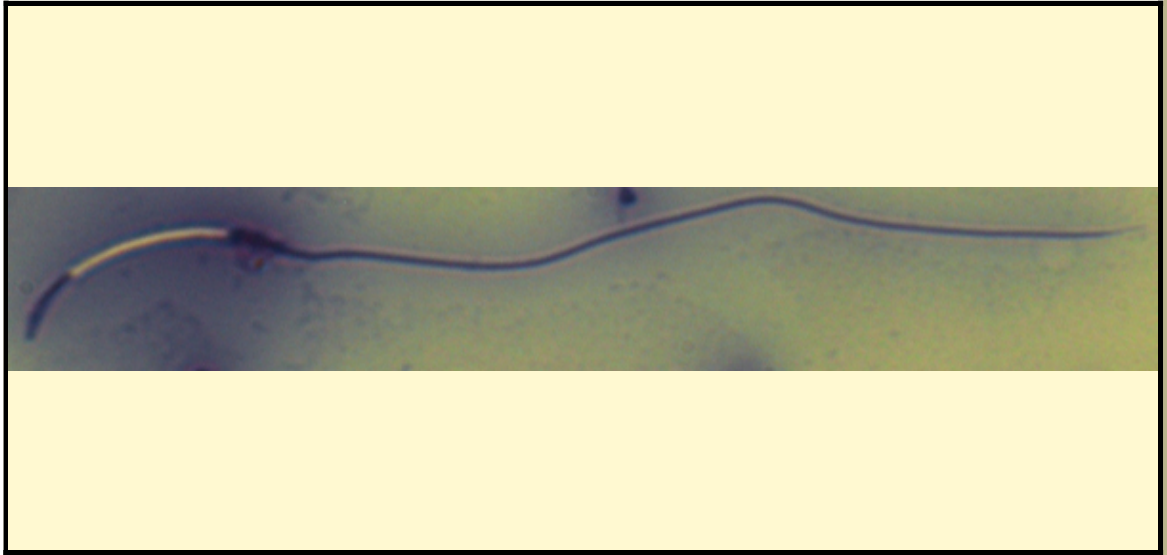


SAN DIEGO ZOO INSTITUTE FOR CONSERVATION RESEARCH
 REPRODUCTIVE PHYSIOLOGY DIVISION
 SPERM ATLAS

COMMON NAME

Fiji Island Banded Iguana

PICTURE



* Pictures are not to scale * All Photos are property of the San Diego Zoo except those credited in the notes

CLASS

Reptilia

RP NUMBER

12-058

ORDER

Squamata

STAIN

Pope

SUBORDER

HEAD SHAPE

Filiformal

FAMILY

Iguanidae

ANIMAL PICTURE

SUBFAMILY

GENUS

Brachylophus



SPECIES

Brachylophus Fasciatus

SUBSPECIES

MEASUREMENTS (µm)

Head Length

20.00

Head Width

1.25

Midpiece Length

Tail Length

62.50

Measure Total

82.50

NOTES

midpiece could not be distinguished from tail