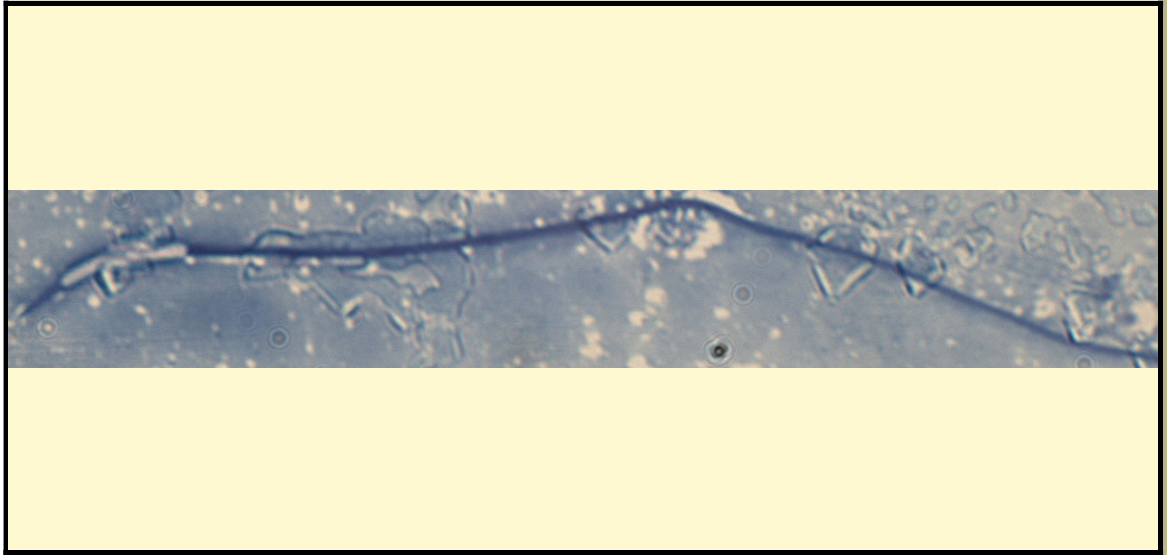


SAN DIEGO ZOO INSTITUTE FOR CONSERVATION RESEARCH
REPRODUCTIVE PHYSIOLOGY DIVISION
SPERM ATLAS

COMMON NAME

Burmese Python

PICTURE



* Pictures are not to scale * All Photos are property of the San Diego Zoo except those credited in the notes

CLASS *Reptilia*

RP NUMBER 13-024

ORDER *Squamata*

STAIN Pope

SUBORDER *Serpentes*

HEAD SHAPE Filiformal

FAMILY *Pythonidae*

SUBFAMILY

ANIMAL PICTURE

GENUS *Python*



SPECIES *Python molurus*

SUBSPECIES *Python molurus bivittatus*

MEASUREMENTS (μm)

Head Length 14.00

Head Width 1.25

Midpiece Length 35.00

Tail Length 50.00

Measure Total 99.00

NOTES

Sperm was too long to capture entire length in photograph
Photo is of albino burmese python