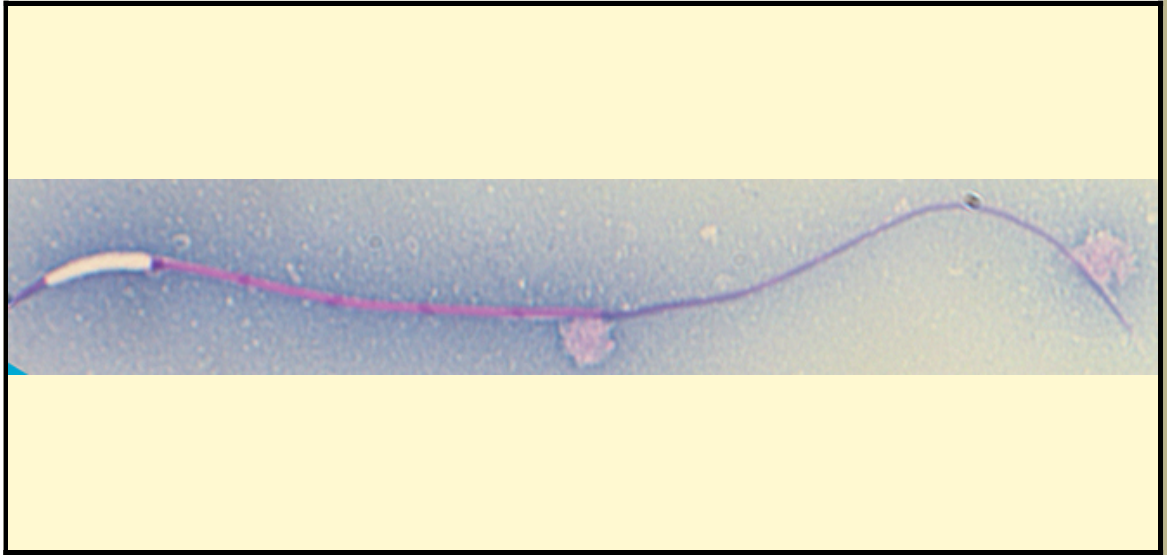


SAN DIEGO ZOO INSTITUTE FOR CONSERVATION RESEARCH  
REPRODUCTIVE PHYSIOLOGY DIVISION  
SPERM ATLAS

COMMON NAME

Indian Python

PICTURE



\* Pictures are not to scale \* All Photos are property of the San Diego Zoo except those credited in the notes

CLASS

Reptilia

RP NUMBER

14-316

ORDER

Squamata

STAIN

Pope

SUBORDER

Serpentes

HEAD SHAPE

Filiformal

FAMILY

Pythonidae

SUBFAMILY

ANIMAL PICTURE

GENUS

Python

SPECIES

*Python molurus*

SUBSPECIES



MEASUREMENTS ( $\mu\text{m}$ )

Head Length

12.00

Head Width

1.25

Midpiece Length

35.00

Tail Length

46.00

Measure Total

93.00

NOTES