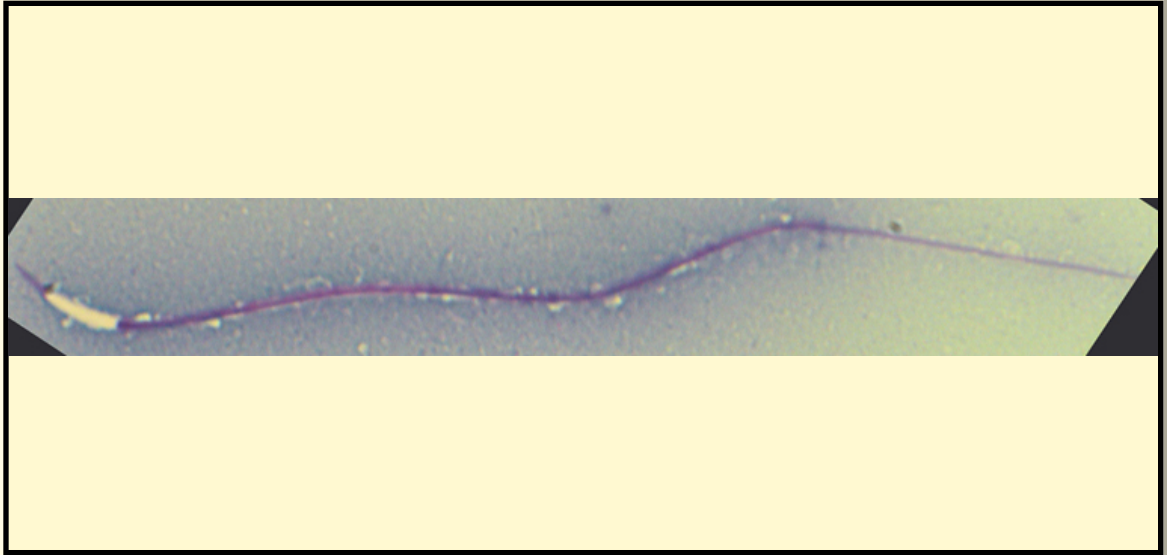


SAN DIEGO ZOO INSTITUTE FOR CONSERVATION RESEARCH  
REPRODUCTIVE PHYSIOLOGY DIVISION  
SPERM ATLAS

COMMON NAME

Red-headed Ratsnake

PICTURE



\* Pictures are not to scale \* All Photos are property of the San Diego Zoo except those credited in the notes

CLASS

Reptilia

RP NUMBER

15-351

ORDER

Squamata

STAIN

Pope

SUBORDER

Serpentes

HEAD SHAPE

Filiformal

FAMILY

Colubridae

SUBFAMILY

ANIMAL PICTURE

GENUS

*Elaphe*



SPECIES

*Elaphe moellendorffi*

SUBSPECIES

MEASUREMENTS ( $\mu\text{m}$ )

Head Length

11.00

Head Width

2.00

Midpiece Length

64.00

Tail Length

29.00

Measure Total

104.00

NOTES

Animal photo credit: Rex Knight