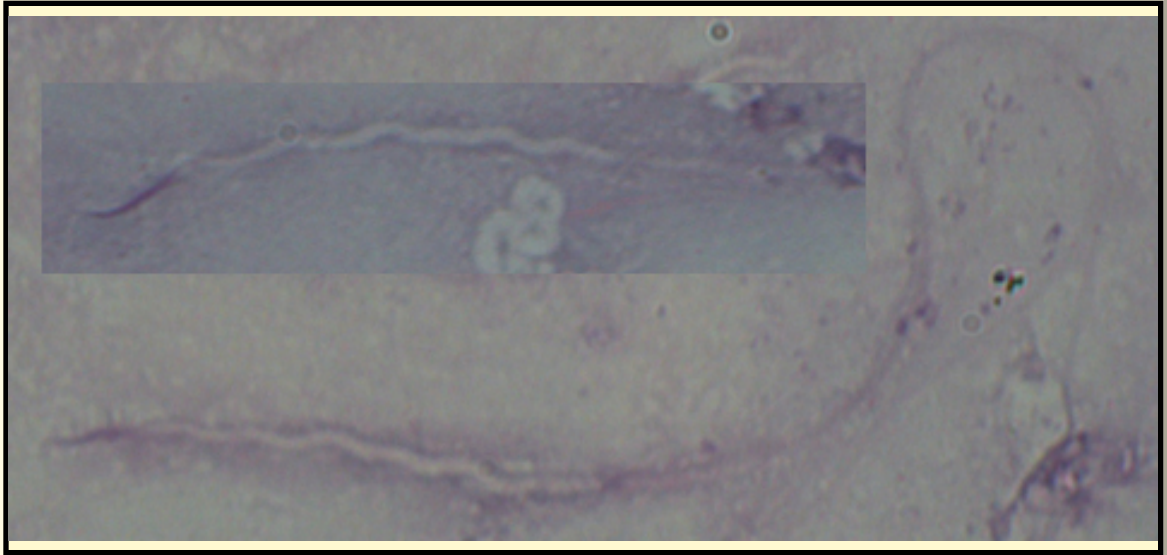


SAN DIEGO ZOO INSTITUTE FOR CONSERVATION RESEARCH  
 REPRODUCTIVE PHYSIOLOGY DIVISION  
 SPERM ATLAS

COMMON NAME

**Grey Smooth-hound (Shark)**

PICTURE



\* Pictures are not to scale \* All Photos are property of the San Diego Zoo except those credited in the notes

CLASS *Chondrichthyes*

RP NUMBER

ORDER *Carcharhiniformes*

STAIN Pap

SUBORDER

HEAD SHAPE Helical

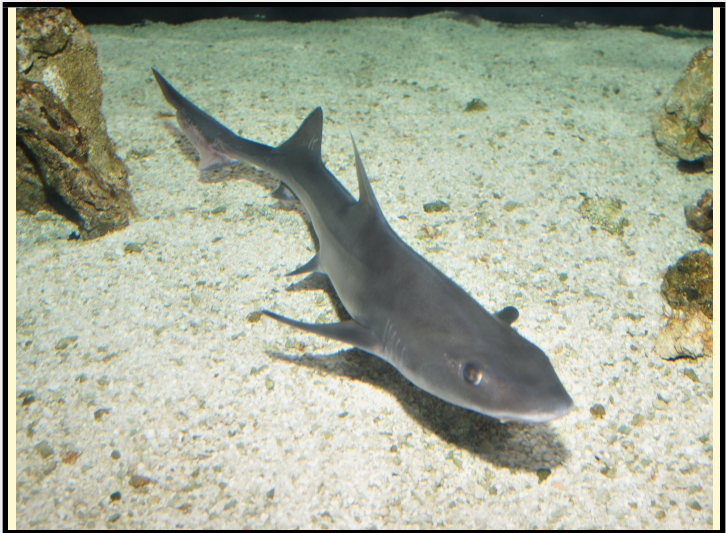
FAMILY *Triakidae*

SUBFAMILY

GENUS *Mustelus*

ANIMAL PICTURE

SPECIES *Mustelus californicus*



SUBSPECIES

MEASUREMENTS (µm)

Head Length 33.00

Head Width 1.00

Midpiece Length

Tail Length 87.00

Measure Total

NOTES

Sperm credit: Birch Aquarium at Scripps  
 Animal Photo Credit: Jeff Whitlock - www.theonlinezoo.com  
 Sperm head may be swollen from fixation process. Picture is a combination of a whole sperm with tail and a second sperm head only