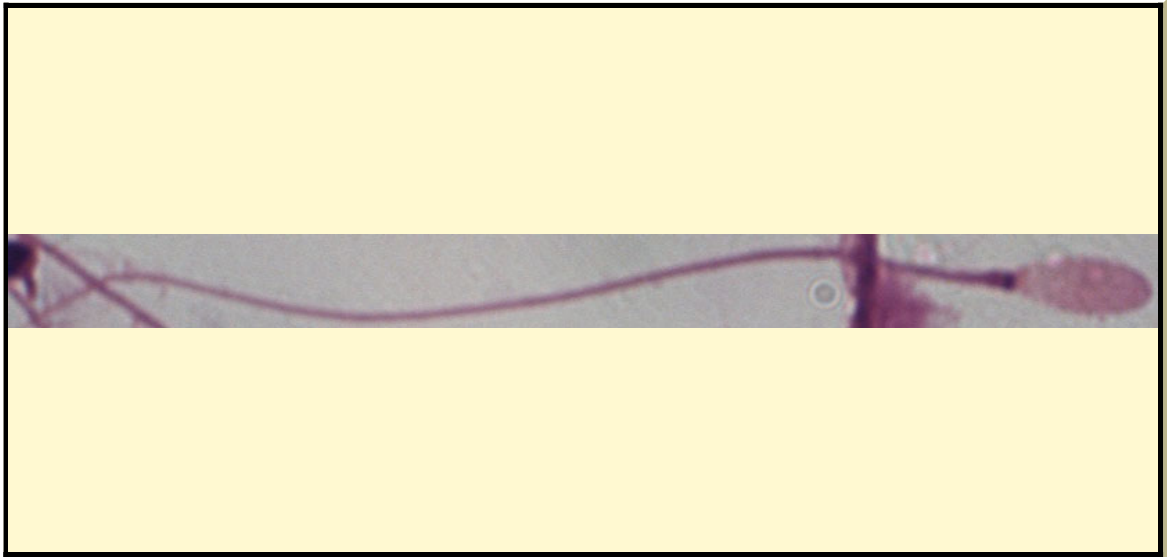


SAN DIEGO ZOO INSTITUTE FOR CONSERVATION RESEARCH  
REPRODUCTIVE PHYSIOLOGY DIVISION  
SPERM ATLAS

COMMON NAME

Przewalski's Horse

PICTURE



\* Pictures are not to scale \* All Photos are property of the San Diego Zoo except those credited in the notes

CLASS

Mammalia

RP NUMBER

ORDER

Perissodactyla

STAIN

Giemsa

SUBORDER

HEAD SHAPE

Oval

FAMILY

Equidae

ANIMAL PICTURE

SUBFAMILY

GENUS

Equus



SPECIES

Equus Ferus

SUBSPECIES

MEASUREMENTS ( $\mu\text{m}$ )

Head Length

5.60

Head Width

2.80

Midpiece Length

6.40

Tail Length

44.00

Measure Total

56.00

NOTES

Overlapping sperm in two areas