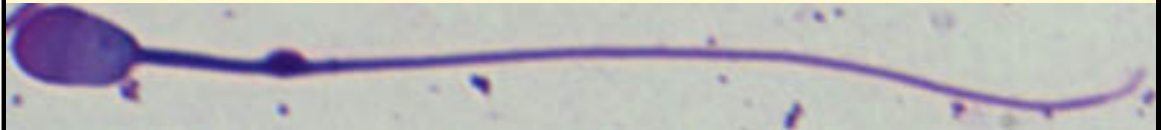


SAN DIEGO ZOO INSTITUTE FOR CONSERVATION RESEARCH
REPRODUCTIVE PHYSIOLOGY DIVISION
SPERM ATLAS

COMMON NAME

Addax

PICTURE



* Pictures are not to scale * All Photos are property of the San Diego Zoo except those credited in the notes

CLASS

Mammalia

RP NUMBER

ORDER

Artiodactyla

STAIN

Giemsa

SUBORDER

FAMILY

Bovidae

HEAD SHAPE

Oval

SUBFAMILY

Hippotraginae

GENUS

Addax

ANIMAL PICTURE

SPECIES

A. nasomaculatus

SUBSPECIES

MEASUREMENTS (μm)

Head Length

6.92

Head Width

4.29

Midpiece Length

10.71

Tail Length

41.76

Measure Total

59.39

NOTES

