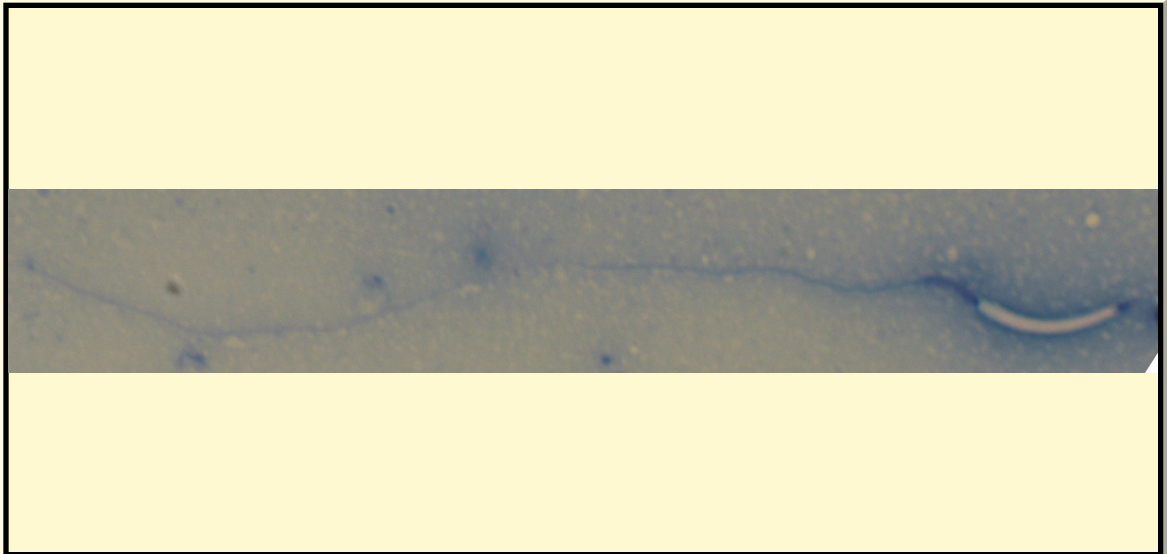


SAN DIEGO ZOO INSTITUTE FOR CONSERVATION RESEARCH
REPRODUCTIVE PHYSIOLOGY DIVISION
SPERM ATLAS

COMMON NAME

Domestic Chicken

PICTURE



* Pictures are not to scale * All Photos are property of the San Diego Zoo except those credited in the notes

CLASS

Aves

RP NUMBER

ORDER

Galiformes

STAIN

Pope

SUBORDER

FAMILY

Phasianidae

HEAD SHAPE

Filiformal

SUBFAMILY

GENUS

Gallus

ANIMAL PICTURE

SPECIES

Gallus gallus

SUBSPECIES

Gallus gallus domesticus

MEASUREMENTS (μm)

Head Length

22.00

Head Width

1.50

Midpiece Length

6.00

Tail Length

69.00

Measure Total

97.00



NOTES