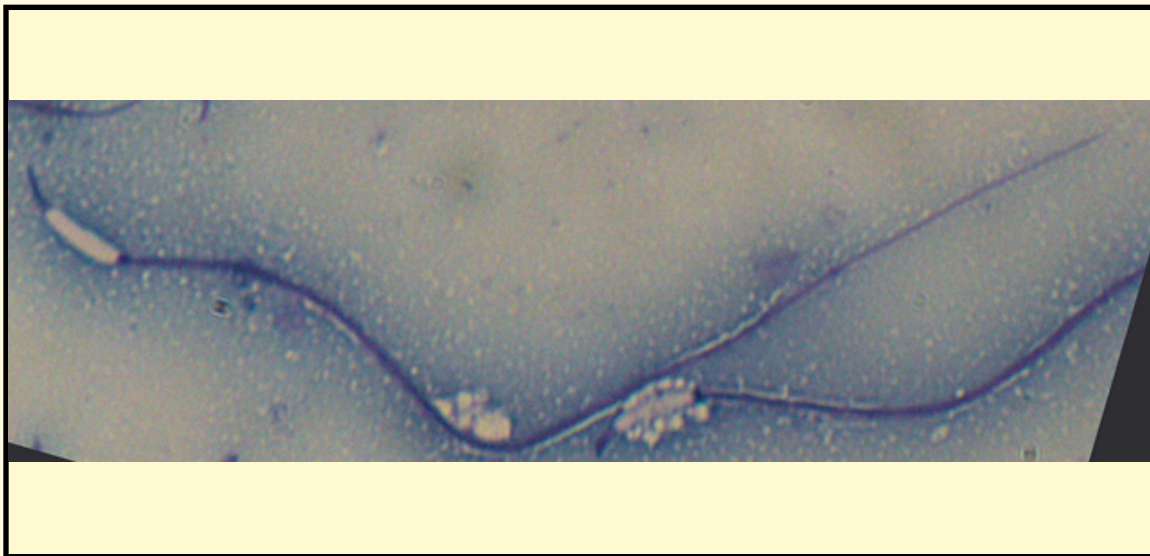


SAN DIEGO ZOO INSTITUTE FOR CONSERVATION RESEARCH  
REPRODUCTIVE PHYSIOLOGY DIVISION  
SPERM ATLAS

COMMON NAME

Samar Cobra

PICTURE



\* Pictures are not to scale \* All Photos are property of the San Diego Zoo except those credited in the notes

CLASS

Reptilia

ORDER

Squamata

SUBORDER

Serpentes

FAMILY

Elapidae

SUBFAMILY

GENUS

Naja

SPECIES

Naja naja samarensis

SUBSPECIES

RP NUMBER

15-329

STAIN

Pope

HEAD SHAPE

Filiform

ANIMAL PICTURE



MEASUREMENTS (μm)

Head Length

12.00

Head Width

2.00

Midpiece Length

60.00

Tail Length

23.00

Measure Total

95.00

NOTES

Sample was from the testicle and therefore was immature and had a cytoplasmic droplet