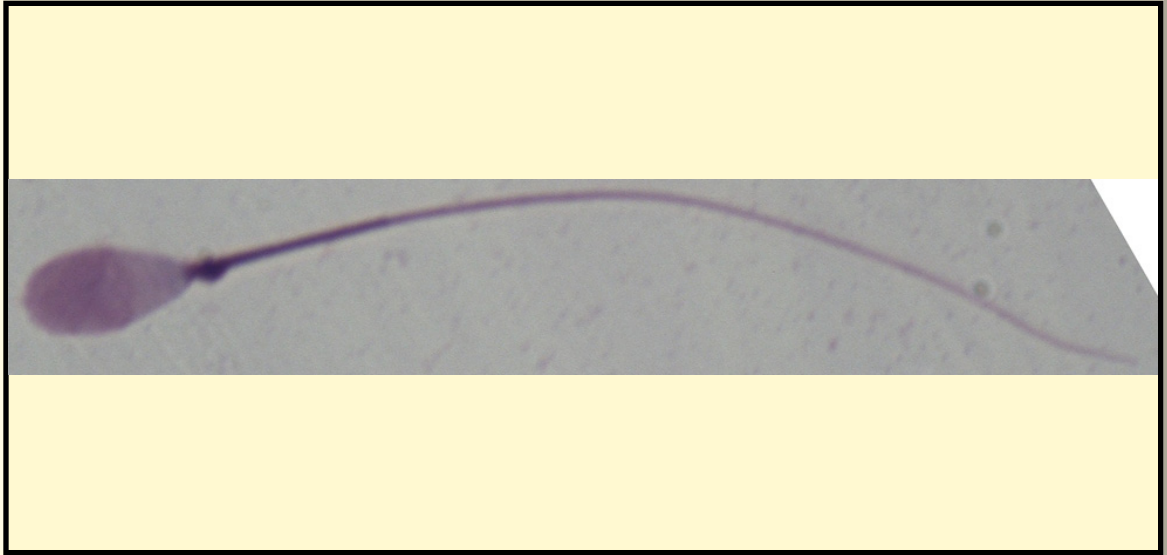


SAN DIEGO ZOO INSTITUTE FOR CONSERVATION RESEARCH
REPRODUCTIVE PHYSIOLOGY DIVISION
SPERM ATLAS

COMMON NAME

Barbary Red Deer

PICTURE



* Pictures are not to scale * All Photos are property of the San Diego Zoo except those credited in the notes

CLASS

Mammalia

RP NUMBER

12-122

ORDER

Artiodactyla

STAIN

Giemsa

SUBORDER

Ruminantia

HEAD SHAPE

Paddle

FAMILY

Cervidae

SUBFAMILY

Cervinae

GENUS

Cervus

ANIMAL PICTURE

SPECIES

Cervus Elaphus Barbarus

SUBSPECIES

MEASUREMENTS (μ m)

Head Length

8.00

Head Width

4.30

Midpiece Length

11.20

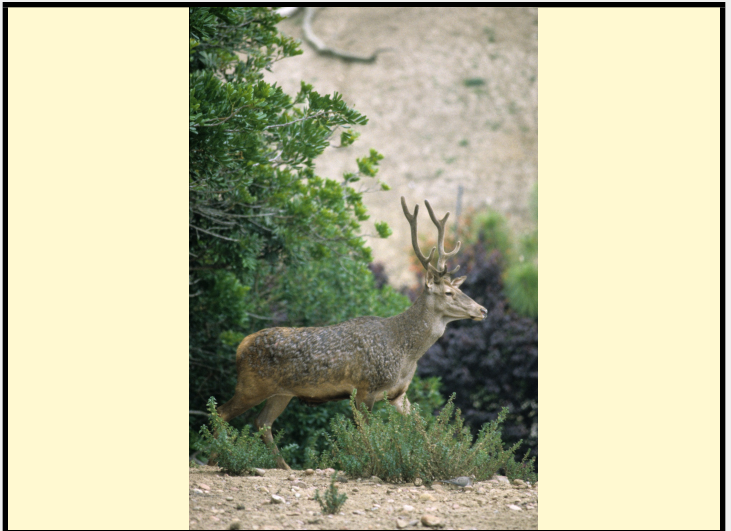
Tail Length

42.80

Measure Total

62.00

NOTES



sperm was epididymal therefore there is a cytoplasmic droplet present