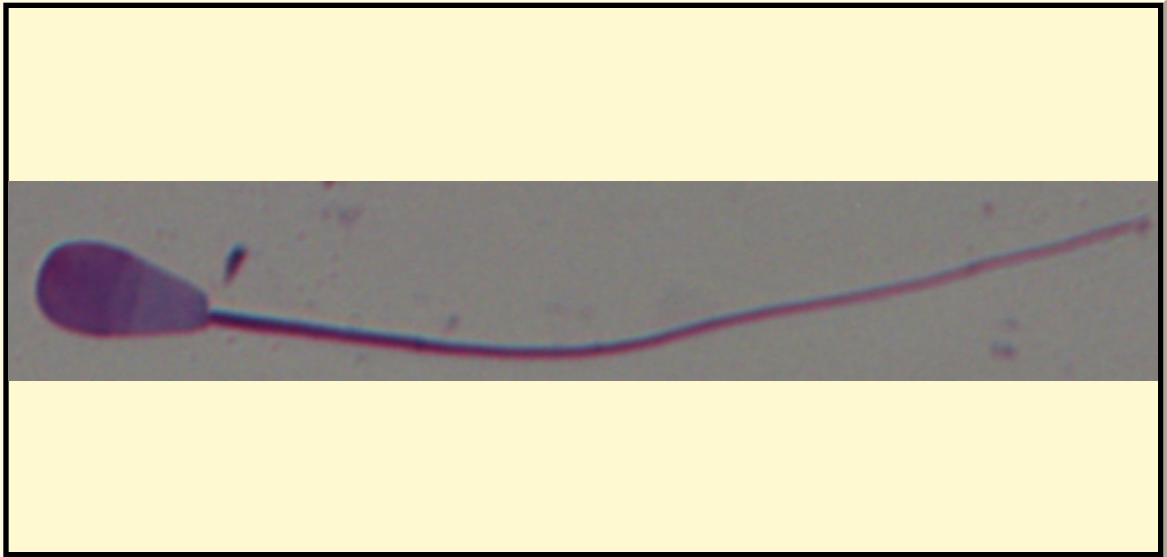


SAN DIEGO ZOO INSTITUTE FOR CONSERVATION RESEARCH
REPRODUCTIVE PHYSIOLOGY DIVISION
SPERM ATLAS

COMMON NAME

California Mule Deer

PICTURE



* Pictures are not to scale * All Photos are property of the San Diego Zoo except those credited in the notes

CLASS

Mammalia

RP NUMBER

14-317

ORDER

Artiodactyla

STAIN

Giemsa

SUBORDER

HEAD SHAPE

Paddle

FAMILY

Cervidae

ANIMAL PICTURE

SUBFAMILY

GENUS

Odocoileus

SPECIES

Odocoileus hemionus

SUBSPECIES

MEASUREMENTS (μ m)

Head Length

7.50

Head Width

4.00

Midpiece Length

10.90

Tail Length

34.60

Measure Total

53.00

NOTES

