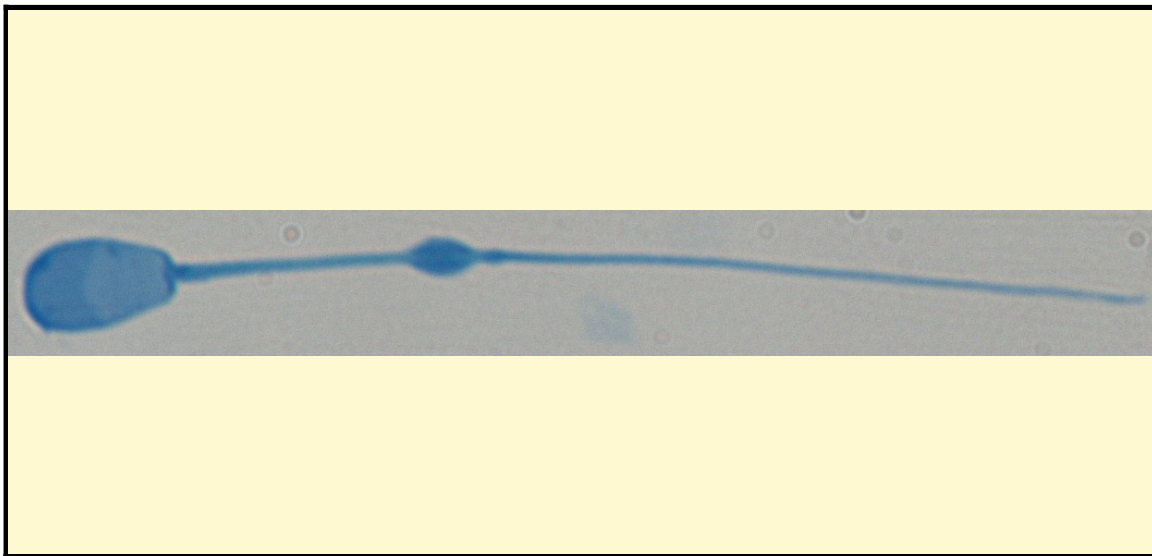


SAN DIEGO ZOO INSTITUTE FOR CONSERVATION RESEARCH  
REPRODUCTIVE PHYSIOLOGY DIVISION  
SPERM ATLAS

COMMON NAME

Siberian Musk Deer

PICTURE



\* Pictures are not to scale \* All Photos are property of the San Diego Zoo except those credited in the notes

CLASS

Mammalia

RP NUMBER

04-137

ORDER

Artiodactyla

STAIN

Coomassie

SUBORDER

Ruminantia

HEAD SHAPE

Paddle

FAMILY

Moschidae

SUBFAMILY

Moschinae

ANIMAL PICTURE

GENUS

Moschus

SPECIES

*M. moschiferus*

SUBSPECIES

MEASUREMENTS ( $\mu$ m)

Head Length

8.00

Head Width

5.00

Midpiece Length

15.00

Tail Length

43.00

Measure Total

66.00

NOTES



Cytoplasmic droplet present due to sperm being extracted directly from the vas deferens