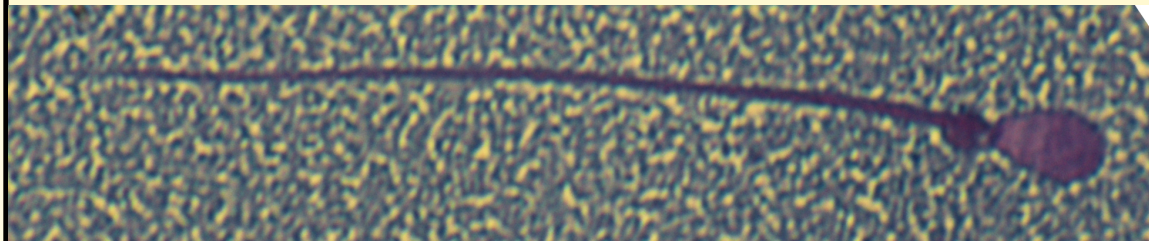


SAN DIEGO ZOO INSTITUTE FOR CONSERVATION RESEARCH
REPRODUCTIVE PHYSIOLOGY DIVISION
SPERM ATLAS

COMMON NAME

New Guinea Singing Dog

PICTURE



* Pictures are not to scale * All Photos are property of the San Diego Zoo except those credited in the notes

CLASS

Mammalia

RP NUMBER

18-166

ORDER

Carnivora

STAIN

Pope

SUBORDER

FAMILY

Canidae

HEAD SHAPE

Oval

SUBFAMILY

GENUS

Canis

ANIMAL PICTURE

SPECIES

Canis hallstromi

SUBSPECIES

MEASUREMENTS (μ m)

Head Length

6.00

Head Width

4.00

Midpiece Length

Tail Length

50.00

Measure Total

56.00



NOTES

Cytoplasmic droplet present due to sperm being extracted directly from the epididymis
Midpiece could not be discerned from tail therefore tail measurement includes tail and midpiece.