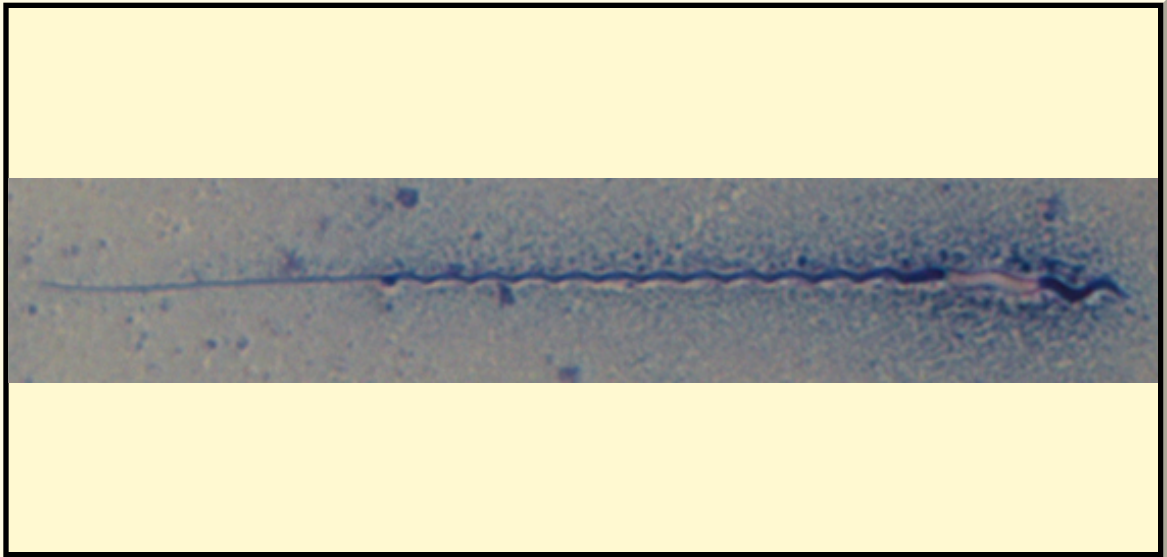


SAN DIEGO ZOO INSTITUTE FOR CONSERVATION RESEARCH
REPRODUCTIVE PHYSIOLOGY DIVISION
SPERM ATLAS

COMMON NAME

Gouldian Finch

PICTURE



* Pictures are not to scale * All Photos are property of the San Diego Zoo except those credited in the notes

CLASS

Aves

RP NUMBER

15-272

ORDER

Passeriformes

STAIN

Pope

SUBORDER

HEAD SHAPE

Helical

FAMILY

Estrildidae

ANIMAL PICTURE

SUBFAMILY

GENUS

Erythrura

SPECIES

Erythrura gouldidae

SUBSPECIES

MEASUREMENTS (μm)

Head Length

6.00

Head Width

1.25

Midpiece Length

43.00

Tail Length

15.00

Measure Total

64.00

NOTES

