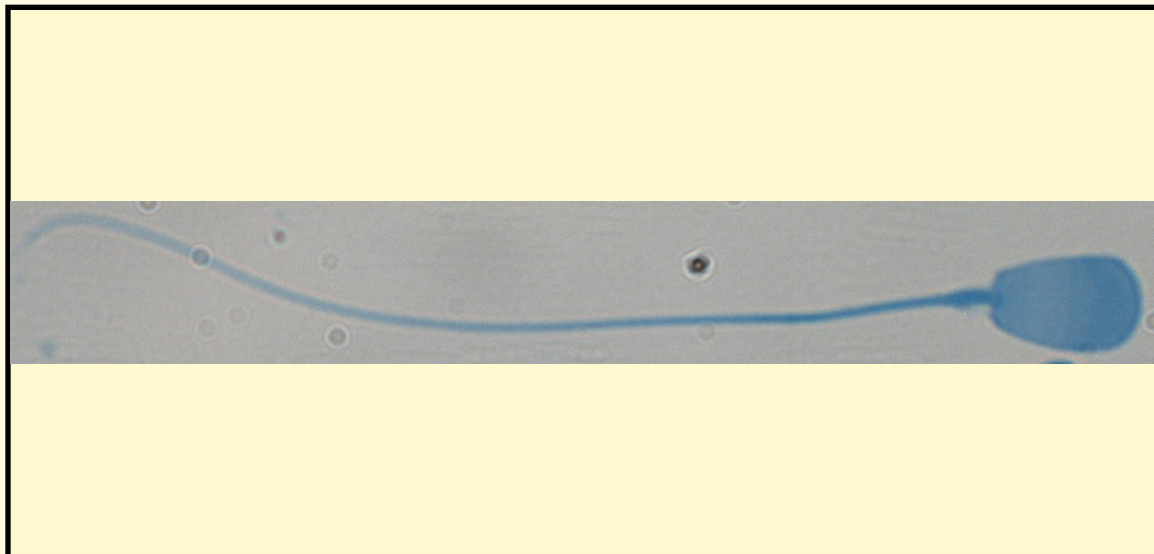


SAN DIEGO ZOO INSTITUTE FOR CONSERVATION RESEARCH
REPRODUCTIVE PHYSIOLOGY DIVISION
SPERM ATLAS

COMMON NAME

Slender-Horned Gazelle

PICTURE



* Pictures are not to scale * All Photos are property of the San Diego Zoo except those credited in the notes

CLASS

Mammalia

RP NUMBER

12-186

ORDER

Artiodactyla

STAIN

Coomassie

SUBORDER

HEAD SHAPE

Paddle

FAMILY

Bovidae

ANIMAL PICTURE

SUBFAMILY

Antilopinae

GENUS

Gazella

SPECIES

G. leptoceros

SUBSPECIES

MEASUREMENTS (μm)

Head Length

8.70

Head Width

4.60

Midpiece Length

12.48

Tail Length

40.34

Measure Total

61.52

NOTES

