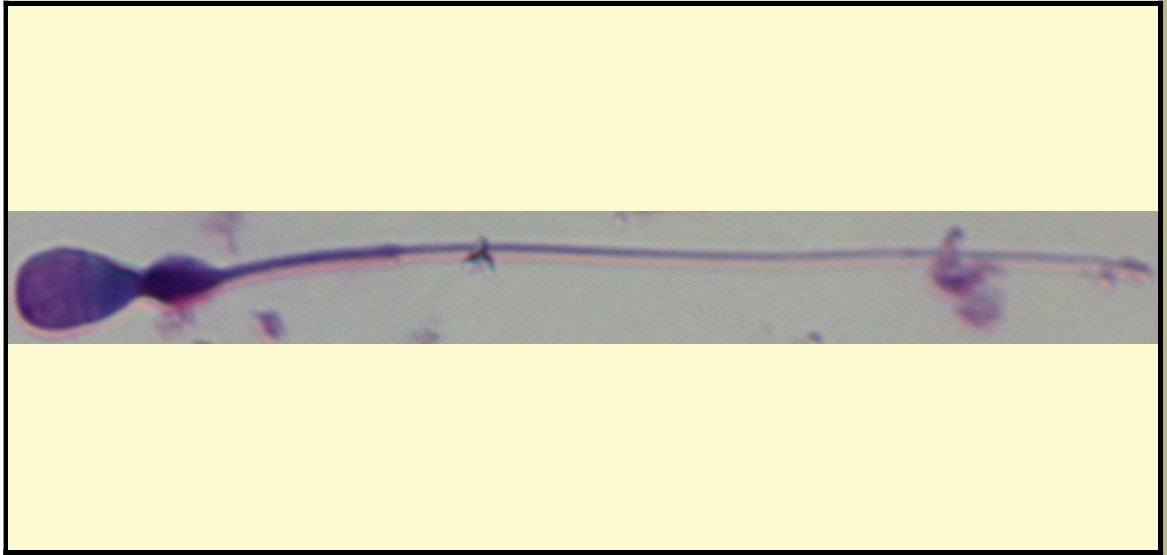


SAN DIEGO ZOO INSTITUTE FOR CONSERVATION RESEARCH
REPRODUCTIVE PHYSIOLOGY DIVISION
SPERM ATLAS

COMMON NAME

Gerenuk

PICTURE



* Pictures are not to scale * All Photos are property of the San Diego Zoo except those credited in the notes

CLASS

Mammalia

RP NUMBER

14-021

ORDER

Artiodactyla

STAIN

Giemsa

SUBORDER

HEAD SHAPE

Paddle

FAMILY

Bovidae

ANIMAL PICTURE

SUBFAMILY

Antilopinae

GENUS

Litocranius

SPECIES

Litocranius walleri walleri

SUBSPECIES

MEASUREMENTS (μm)

Head Length

8.00

Head Width

4.00

Midpiece Length

13.00

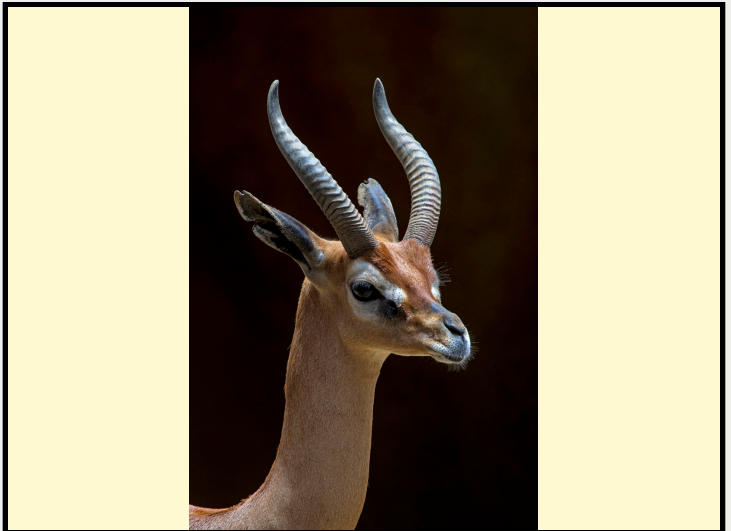
Tail Length

33.00

Measure Total

54.00

NOTES



the sperm was epididymal therefore there is a cytoplasmic droplet present