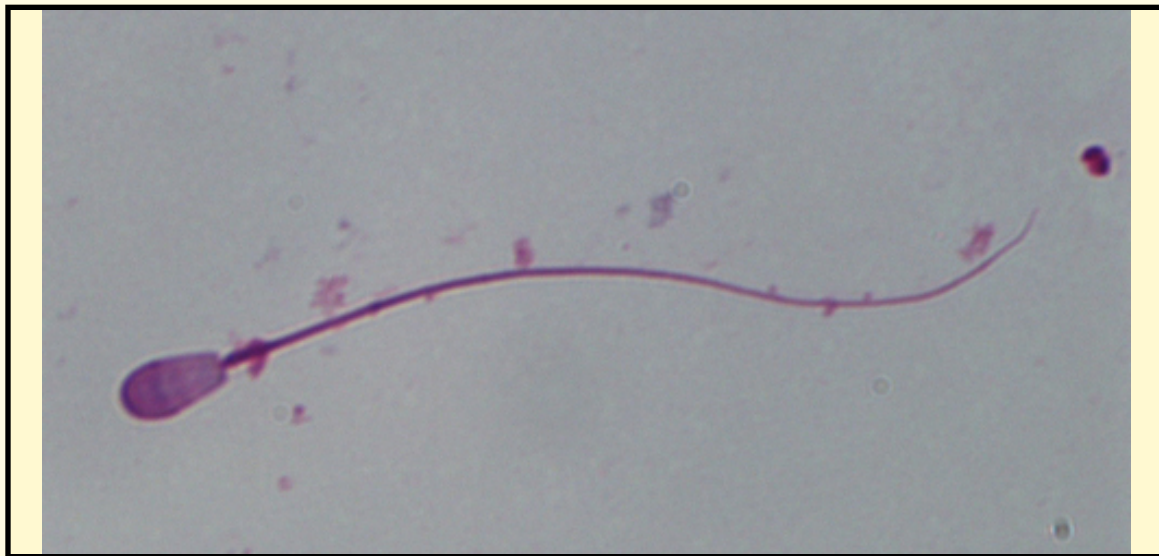


SAN DIEGO ZOO INSTITUTE FOR CONSERVATION RESEARCH
REPRODUCTIVE PHYSIOLOGY DIVISION
SPERM ATLAS

COMMON NAME

Central Chinese Goral

PICTURE



* Pictures are not to scale * All Photos are property of the San Diego Zoo except those credited in the notes

CLASS

Mammalia

RP NUMBER

05-036

ORDER

Artiodactyla

STAIN

Giemsa

SUBORDER

Ruminantia

HEAD SHAPE

Oval

FAMILY

Bovidae

SUBFAMILY

Caprinae

ANIMAL PICTURE

GENUS

Nemorhaedus

SPECIES

N. goral

SUBSPECIES

N. goral arnouxianus

MEASUREMENTS (μm)

Head Length

6.00

Head Width

2.50

Midpiece Length

10.60

Tail Length

44.20

Measure Total

60.80

NOTES

