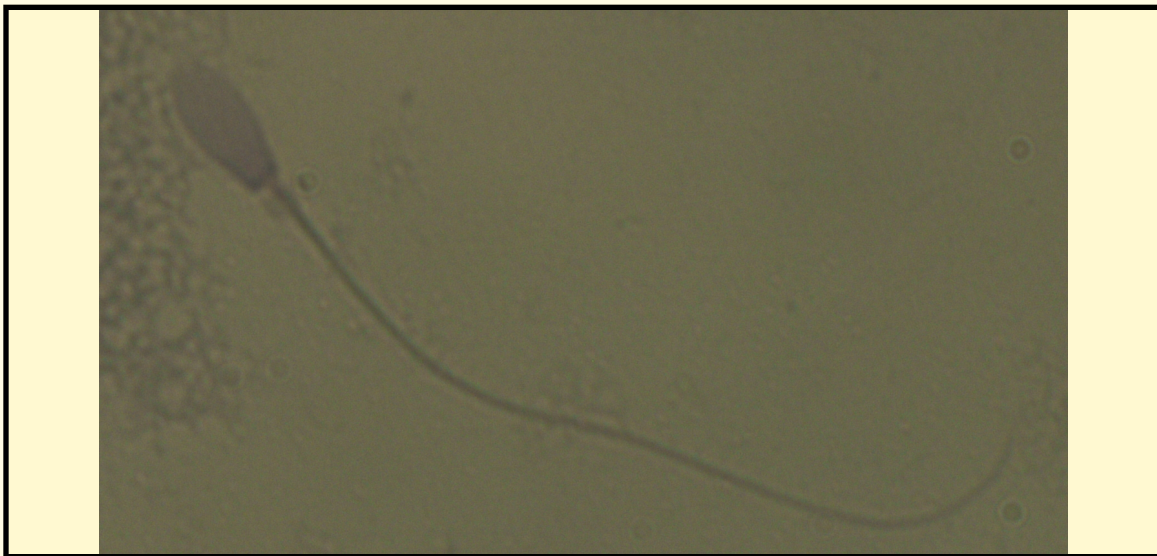


SAN DIEGO ZOO INSTITUTE FOR CONSERVATION RESEARCH
REPRODUCTIVE PHYSIOLOGY DIVISION
SPERM ATLAS

COMMON NAME

Red River Hog

PICTURE



* Pictures are not to scale * All Photos are property of the San Diego Zoo except those credited in the notes

CLASS

Mammalia

RP NUMBER

12-200A

ORDER

Artiodactyla

STAIN

Pap

SUBORDER

HEAD SHAPE

Oval

FAMILY

Suidae

SUBFAMILY

ANIMAL PICTURE

GENUS

Potamochoerus

SPECIES

Potamochoerus porcus

SUBSPECIES

MEASUREMENTS (μ m)

Head Length

8.50

Head Width

3.00

Midpiece Length

Tail Length

48.00

Measure Total

56.50

NOTES



Cytoplasmic droplet present due to sperm being extracted directly from the epididymis
Midpiece could not be discerned from tail therefore tail measurement includes tail and midpiece.