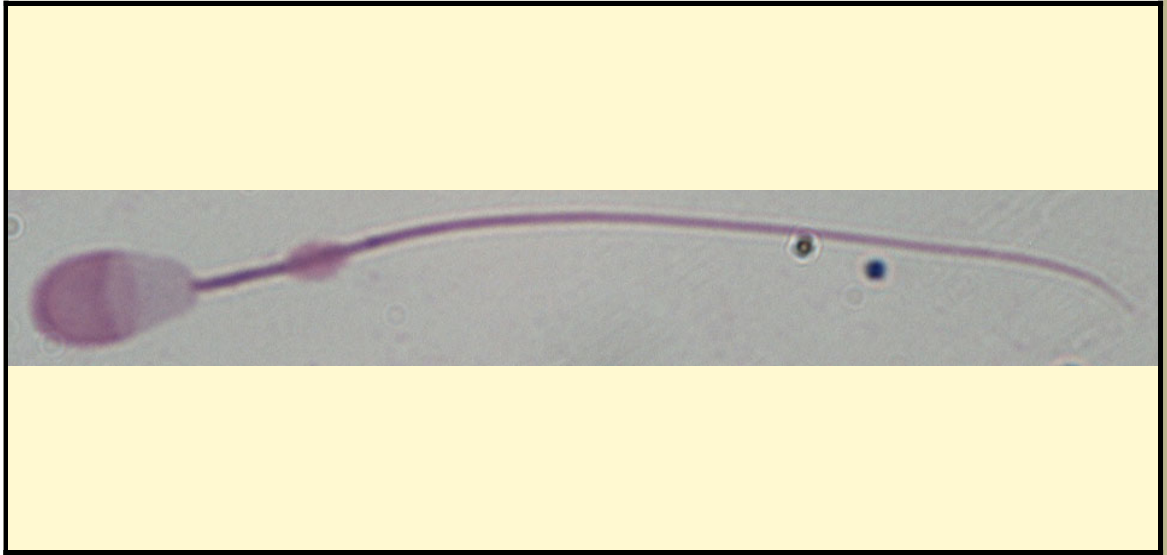


SAN DIEGO ZOO INSTITUTE FOR CONSERVATION RESEARCH  
REPRODUCTIVE PHYSIOLOGY DIVISION  
SPERM ATLAS

COMMON NAME

Kenya Impala

PICTURE



\* Pictures are not to scale \* All Photos are property of the San Diego Zoo except those credited in the notes

CLASS

Mammalia

RP NUMBER

ORDER

Artiodactyla

STAIN

Giemsa

SUBORDER

HEAD SHAPE

Paddle

FAMILY

Bovidae

SUBFAMILY

Aepycerotinae

ANIMAL PICTURE

GENUS

Aepyceros

SPECIES

*A. melampus*

SUBSPECIES

MEASUREMENTS ( $\mu\text{m}$ )

Head Length

8.92

Head Width

5.71

Midpiece Length

11.77

Tail Length

38.36

Measure Total

56.05

NOTES

