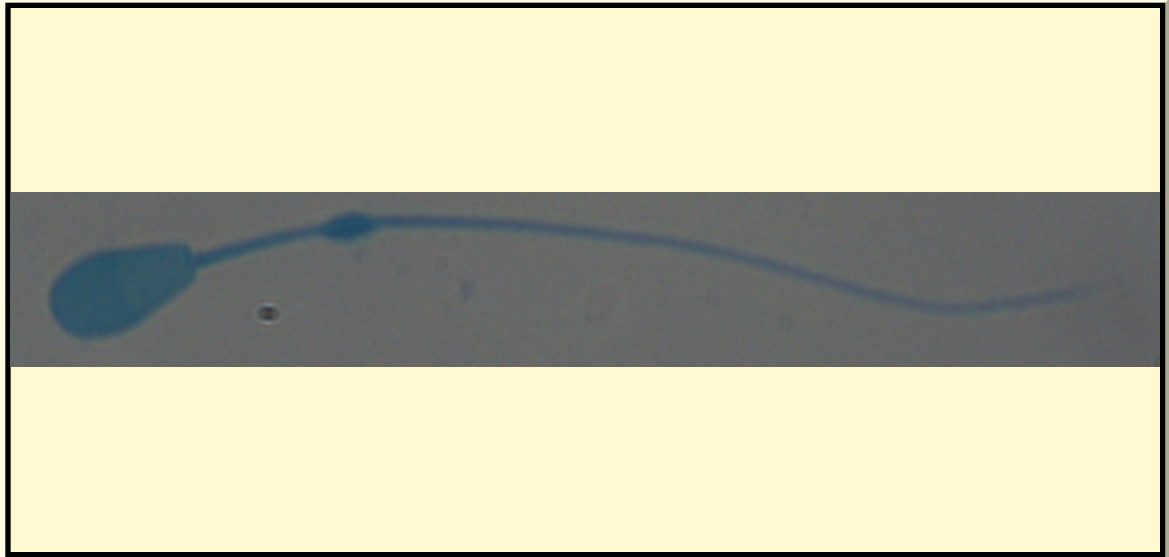


SAN DIEGO ZOO INSTITUTE FOR CONSERVATION RESEARCH  
REPRODUCTIVE PHYSIOLOGY DIVISION  
SPERM ATLAS

COMMON NAME

Zambesi Lechwe

PICTURE



\* Pictures are not to scale \* All Photos are property of the San Diego Zoo except those credited in the notes

CLASS

Mammalia

RP NUMBER

15-020

ORDER

Artiodactyla

STAIN

Coomassie

SUBORDER

HEAD SHAPE

Paddle

FAMILY

Bovidae

ANIMAL PICTURE

SUBFAMILY

GENUS

Kobus

SPECIES

Kobus leche

SUBSPECIES

MEASUREMENTS ( $\mu$ m)

Head Length

7.40

Head Width

4.10

Midpiece Length

11.00

Tail Length

37.20

Measure Total

55.60

NOTES



the sperm was epididymal therefore there is a cytoplasmic droplet present

SAN DIEGO ZOO INSTITUTE FOR CONSERVATION RESEARCH  
REPRODUCTIVE PHYSIOLOGY DIVISION  
SPERM ATLAS

COMMON NAME

Nile Lechwe

PICTURE



\* Pictures are not to scale \* All Photos are property of the San Diego Zoo except those credited in the notes

CLASS

Mammalia

RP NUMBER

16-025

ORDER

Artiodactyla

STAIN

Pope

SUBORDER

FAMILY

Bovidae

HEAD SHAPE

Paddle

SUBFAMILY

GENUS

Kobus

ANIMAL PICTURE

SPECIES

*Kobus megaceros*

SUBSPECIES

MEASUREMENTS ( $\mu$ m)

Head Length

7.80

Head Width

4.40

Midpiece Length

10.70

Tail Length

38.80

Measure Total

57.30

NOTES

