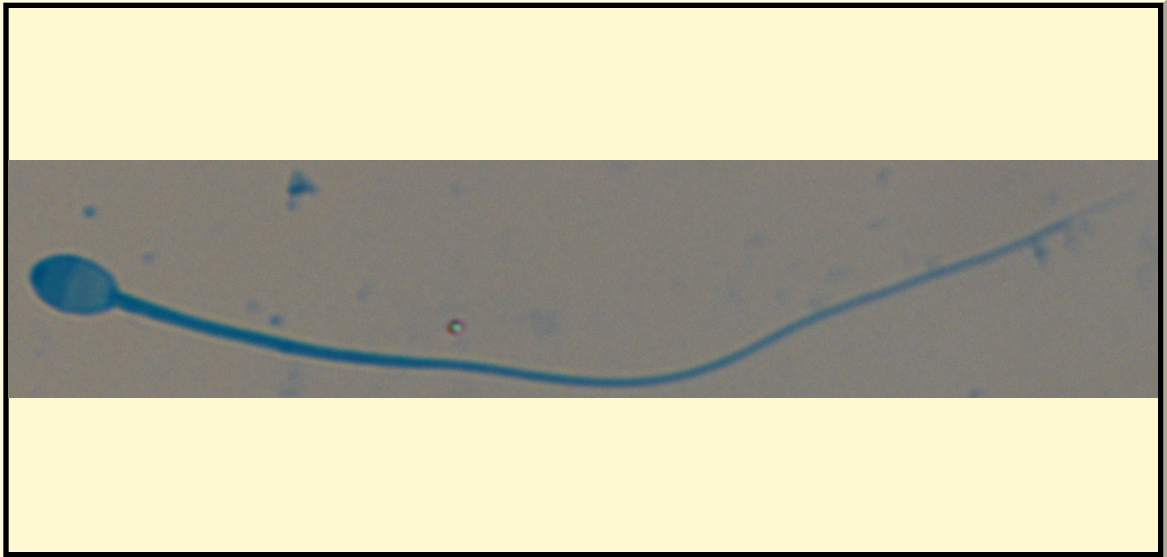


SAN DIEGO ZOO INSTITUTE FOR CONSERVATION RESEARCH
REPRODUCTIVE PHYSIOLOGY DIVISION
SPERM ATLAS

COMMON NAME

North Chinese Leopard

PICTURE



* Pictures are not to scale * All Photos are property of the San Diego Zoo except those credited in the notes

CLASS

Mammalia

RP NUMBER

14-100

ORDER

Carnivora

STAIN

Pope

SUBORDER

HEAD SHAPE

Oval

FAMILY

Felidae

ANIMAL PICTURE

SUBFAMILY

GENUS

Panthera

SPECIES

P. Pardus Japonensis

SUBSPECIES

MEASUREMENTS (μ m)

Head Length

4.00

Head Width

2.50

Midpiece Length

15.00

Tail Length

23.00

Measure Total

42.00



NOTES