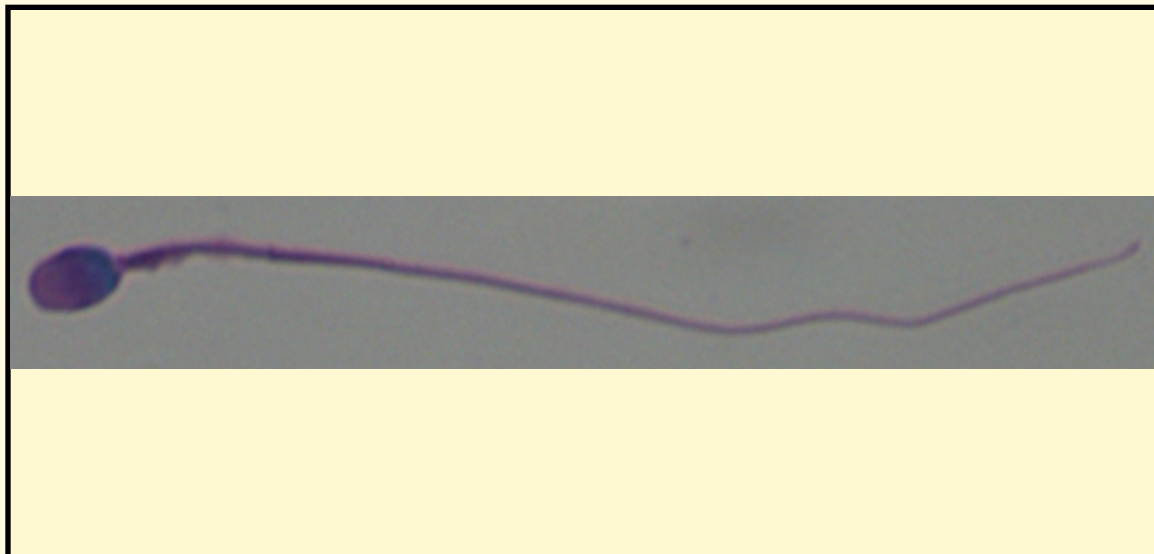


SAN DIEGO ZOO INSTITUTE FOR CONSERVATION RESEARCH
REPRODUCTIVE PHYSIOLOGY DIVISION
SPERM ATLAS

COMMON NAME

Transvaal Lion

PICTURE



* Pictures are not to scale * All Photos are property of the San Diego Zoo except those credited in the notes

CLASS

Mammalia

RP NUMBER

06-042

ORDER

Carnivora

STAIN

Giemsa

SUBORDER

Feliformia

HEAD SHAPE

Round

FAMILY

Felidae

SUBFAMILY

Felinae

ANIMAL PICTURE

GENUS

Panthera

SPECIES

P. leo

SUBSPECIES

P. leo krugeri

MEASUREMENTS (μm)

Head Length

4.20

Head Width

2.40

Midpiece Length

7.40

Tail Length

43.10

Measure Total

54.70

NOTES

