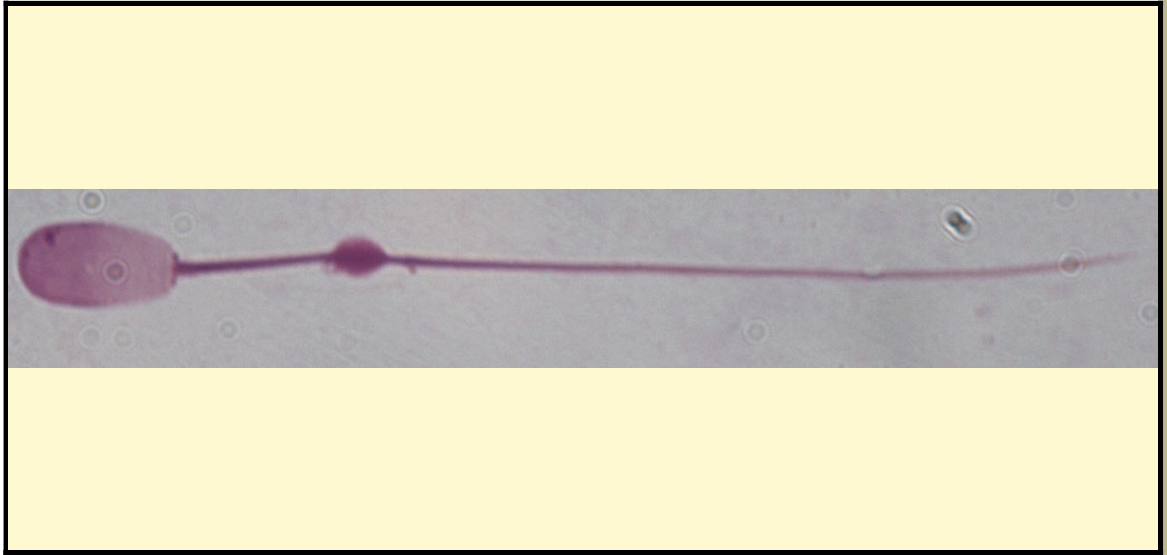


SAN DIEGO ZOO INSTITUTE FOR CONSERVATION RESEARCH
REPRODUCTIVE PHYSIOLOGY DIVISION
SPERM ATLAS

COMMON NAME

Lowland Nyala

PICTURE



* Pictures are not to scale * All Photos are property of the San Diego Zoo except those credited in the notes

CLASS

Mammalia

RP NUMBER

12-040

ORDER

Artiodactyla

STAIN

Giemsa

SUBORDER

HEAD SHAPE

Paddle

FAMILY

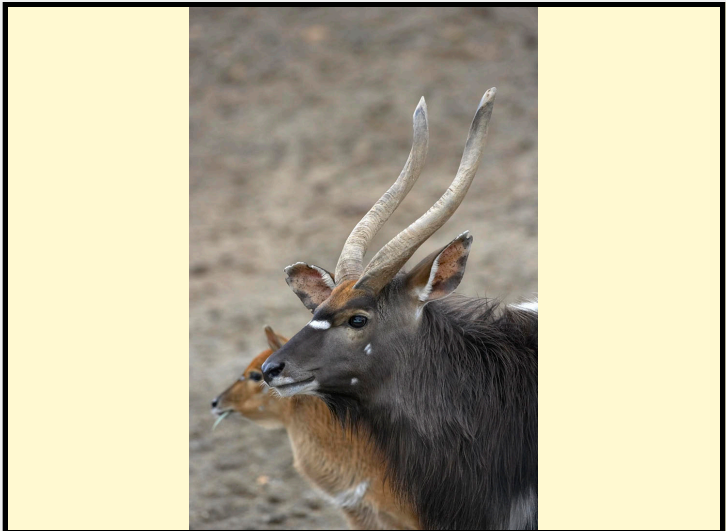
Bovidae

ANIMAL PICTURE

SUBFAMILY

GENUS

Tragelaphus



SPECIES

Tragelaphus angasii

SUBSPECIES

MEASUREMENTS (μm)

Head Length

10.00

Head Width

4.00

Midpiece Length

18.00

Tail Length

33.00

Measure Total

66.00

NOTES

the sperm was epididymal therefore there is a cytoplasmic droplet present