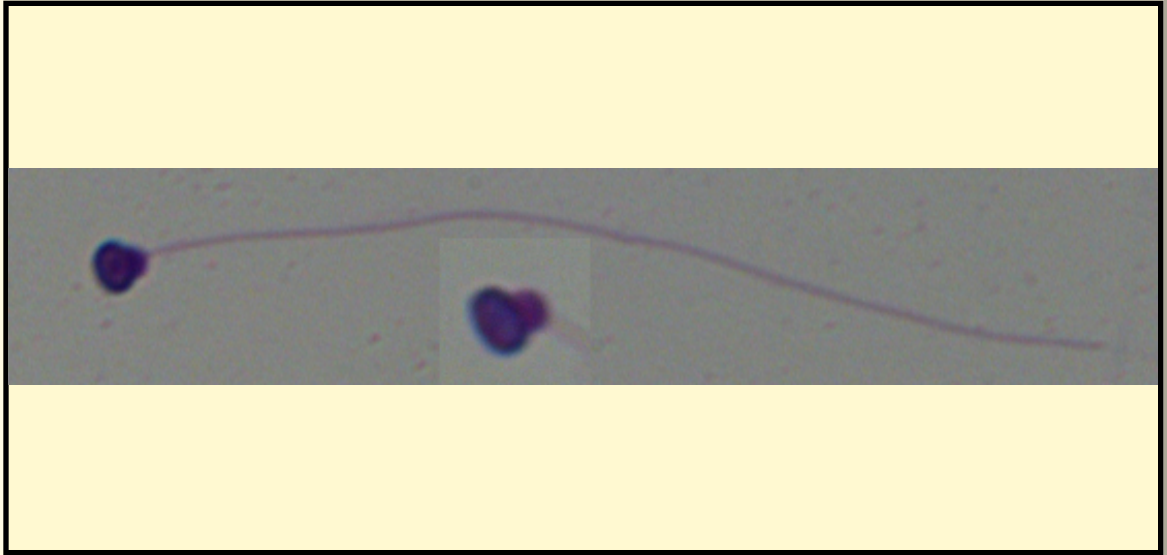


SAN DIEGO ZOO INSTITUTE FOR CONSERVATION RESEARCH
REPRODUCTIVE PHYSIOLOGY DIVISION
SPERM ATLAS

COMMON NAME

Pilchard (Sardine)

PICTURE



* Pictures are not to scale * All Photos are property of the San Diego Zoo except those credited in the notes

CLASS

Actinopterygii

RP NUMBER

ORDER

Clupeiformes

STAIN

Pinacyanol Chloride

SUBORDER

HEAD SHAPE

Round

FAMILY

Clupeidae

ANIMAL PICTURE

SUBFAMILY

GENUS

Sardinops

SPECIES

Sardinops sagax

SUBSPECIES

MEASUREMENTS (μm)

Head Length

2.00

Head Width

2.00

Midpiece Length

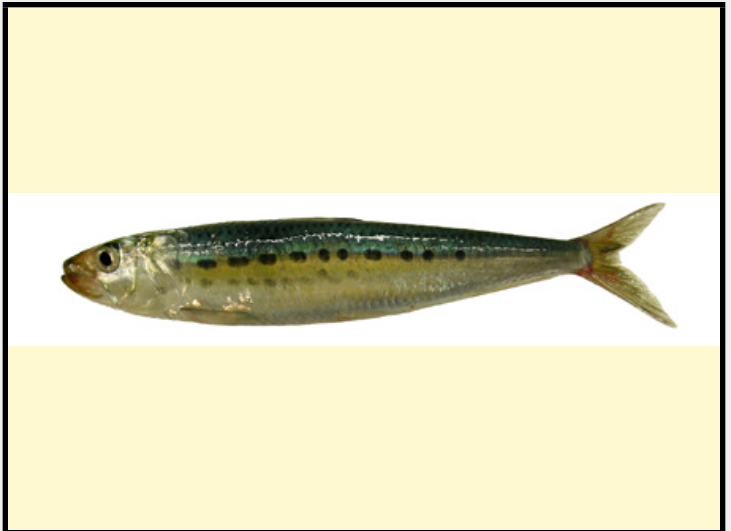
Tail Length

42.00

Measure Total

44.00

NOTES



Sperm sample from: Birch Aquarium at Scripps

Animal Photo: wikimedia commons: <http://www.nmfs.noaa.gov/fishwatch/species/sardine.htm>

Sperm photo of whole sperm and close up of head of sperm