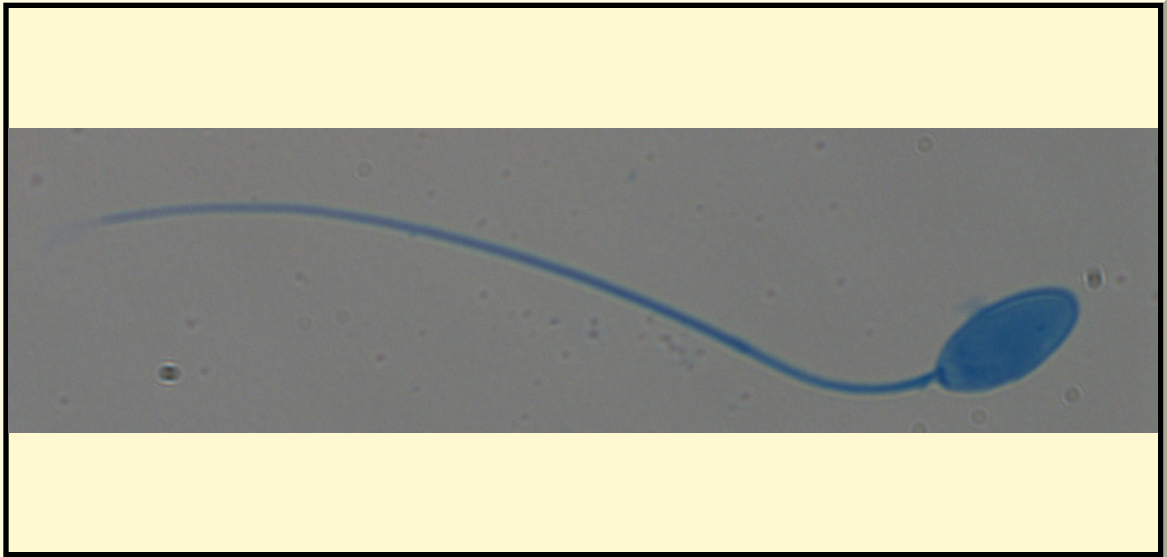


SAN DIEGO ZOO INSTITUTE FOR CONSERVATION RESEARCH  
REPRODUCTIVE PHYSIOLOGY DIVISION  
SPERM ATLAS

COMMON NAME

Guyanana Tamandua

PICTURE



\* Pictures are not to scale \* All Photos are property of the San Diego Zoo except those credited in the notes

CLASS

Mammalia

RP NUMBER

19-017

ORDER

Pilosa

STAIN

Coomassie

SUBORDER

HEAD SHAPE

Oval

FAMILY

Myrmecophagidae

ANIMAL PICTURE

SUBFAMILY

GENUS

Tamandua

SPECIES

Tamandua tetradactyla

SUBSPECIES

MEASUREMENTS ( $\mu$ m)

Head Length

10.00

Head Width

6.00

Midpiece Length

Tail Length

61.00

Measure Total

71.00

NOTES



Midpiece could not be discerned from tail therefore tail measurement includes tail and midpiece.