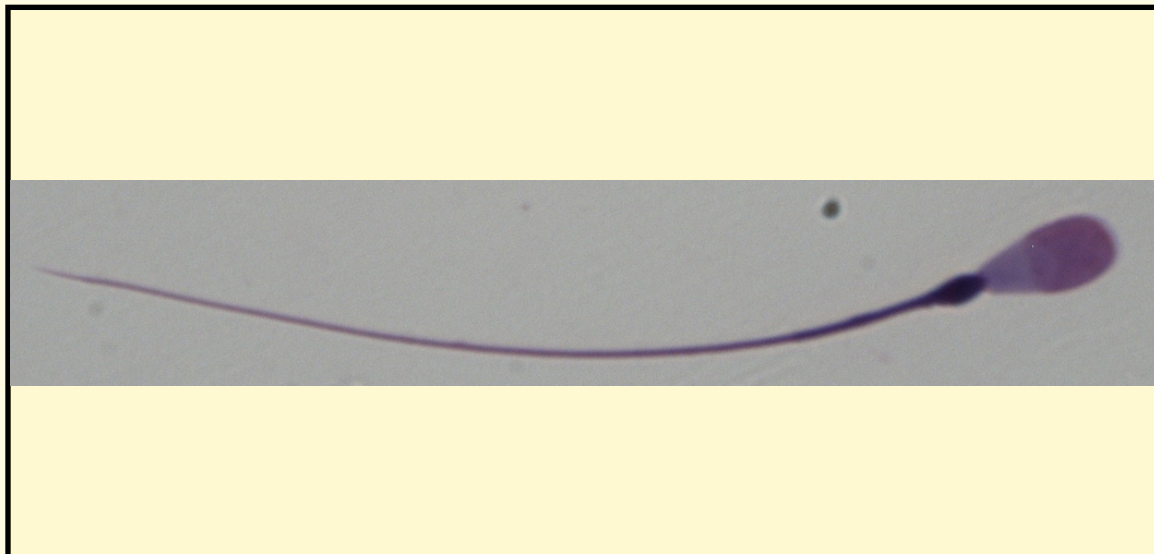


SAN DIEGO ZOO INSTITUTE FOR CONSERVATION RESEARCH
REPRODUCTIVE PHYSIOLOGY DIVISION
SPERM ATLAS

COMMON NAME

Burmese Thamin

PICTURE



* Pictures are not to scale * All Photos are property of the San Diego Zoo except those credited in the notes

CLASS

Mammalia

RP NUMBER

12-106

ORDER

Artiodactyla

STAIN

Giemsa

SUBORDER

HEAD SHAPE

Paddle

FAMILY

Cervidae

ANIMAL PICTURE

SUBFAMILY

Cervinae

GENUS

cervus

SPECIES

Rucervus eldii thamin

SUBSPECIES

MEASUREMENTS (μm)

Head Length

6.90

Head Width

3.60

Midpiece Length

14.10

Tail Length

44.80

Measure Total

65.80



NOTES

Cytoplasmic droplet below sperm head due to the fact it is epididymal sperm