

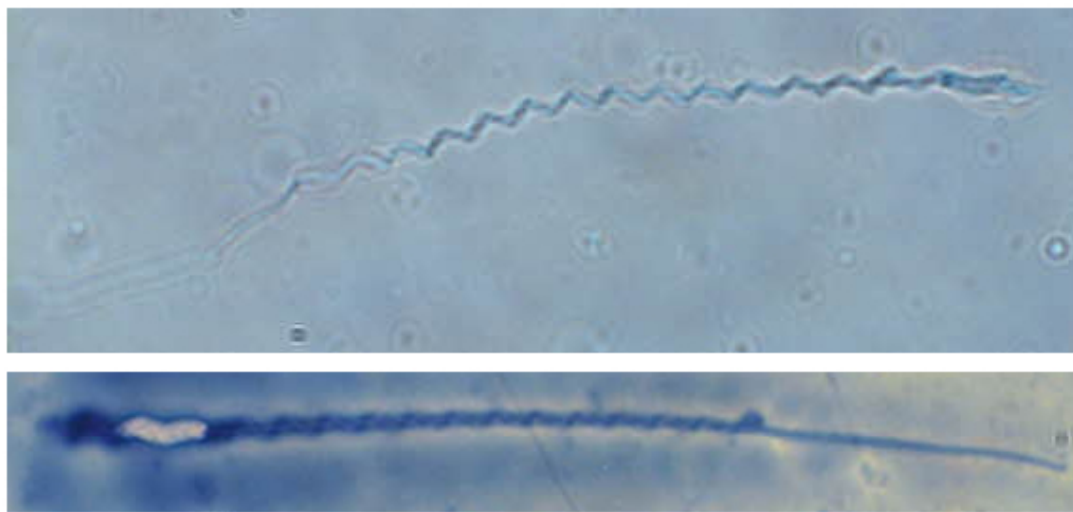
# SAN DIEGO ZOO WILDLIFE ALLIANCE

## SPERM ATLAS

COMMON NAME

Tricolored Parrotfinch

PICTURE



\* Pictures are not to scale \* All Photos are property of the San Diego Zoo except those credited in the notes

CLASS

Aves

RP NUMBER

22-109

ORDER

Passeriformes

STAIN

Pope and No stain

SUBORDER

FAMILY

Estrildidae

HEAD SHAPE

Sickle

SUBFAMILY

GENUS

*Erythrura*

ANIMAL PICTURE

SPECIES

*Erythrura tricolor*

SUBSPECIES

MEASUREMENTS ( $\mu\text{m}$ )

Head Length

12.40

Head Width

1.50

Midpiece Length

Tail Length

64.00

Measure Total

76.40



NOTES

Animal photo credit: KathyKafka istock Getty Images

Midpiece could not be discerned from tail therefore tail measurement includes tail and midpiece.