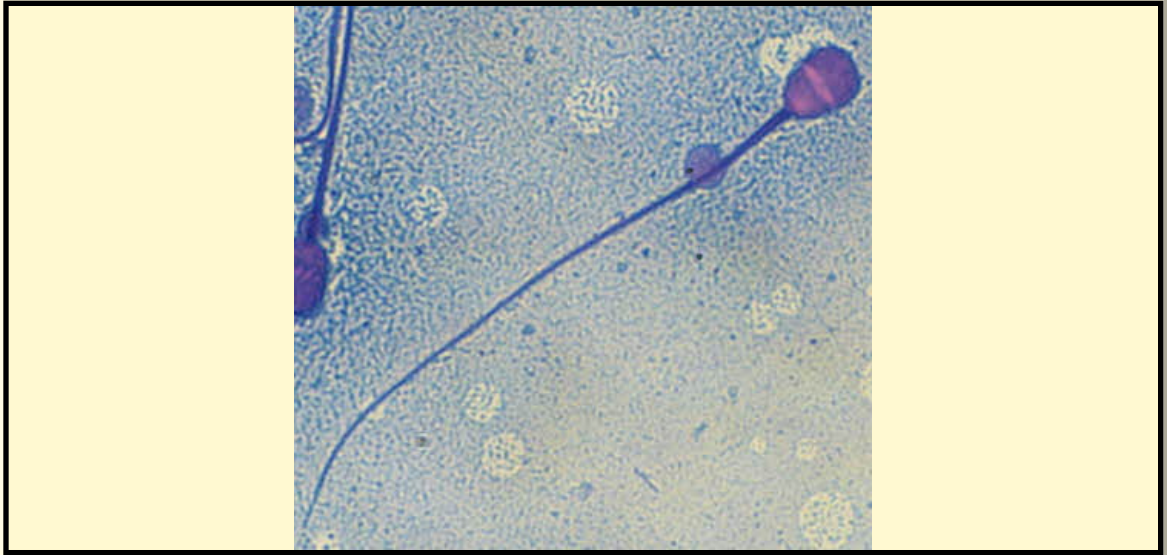


# SAN DIEGO ZOO WILDLIFE ALLIANCE SPERM ATLAS

COMMON NAME

Speke's Gazelle

PICTURE



\* Pictures are not to scale \* All Photos are property of the San Diego Zoo except those credited in the notes

CLASS

Mammalia

RP NUMBER

22-135

ORDER

Artiodactyla

STAIN

Pope

SUBORDER

HEAD SHAPE

Paddle

FAMILY

Bovidae

SUBFAMILY

Antilopinae

GENUS

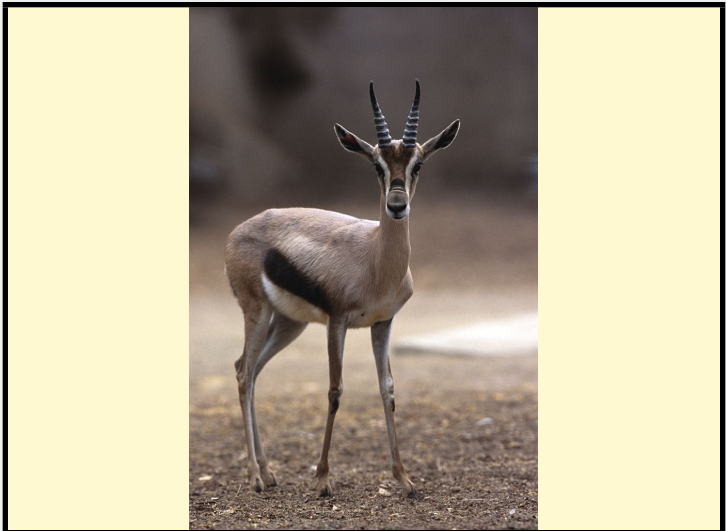
Gazella

ANIMAL PICTURE

SPECIES

*G. spekei*

SUBSPECIES



## MEASUREMENTS ( $\mu\text{m}$ )

Head Length

7.70

Head Width

5.00

Midpiece Length

10.50

Tail Length

48.50

Measure Total

66.70

NOTES

Cytoplasmic droplet present due to sperm being extracted directly from the epididymis