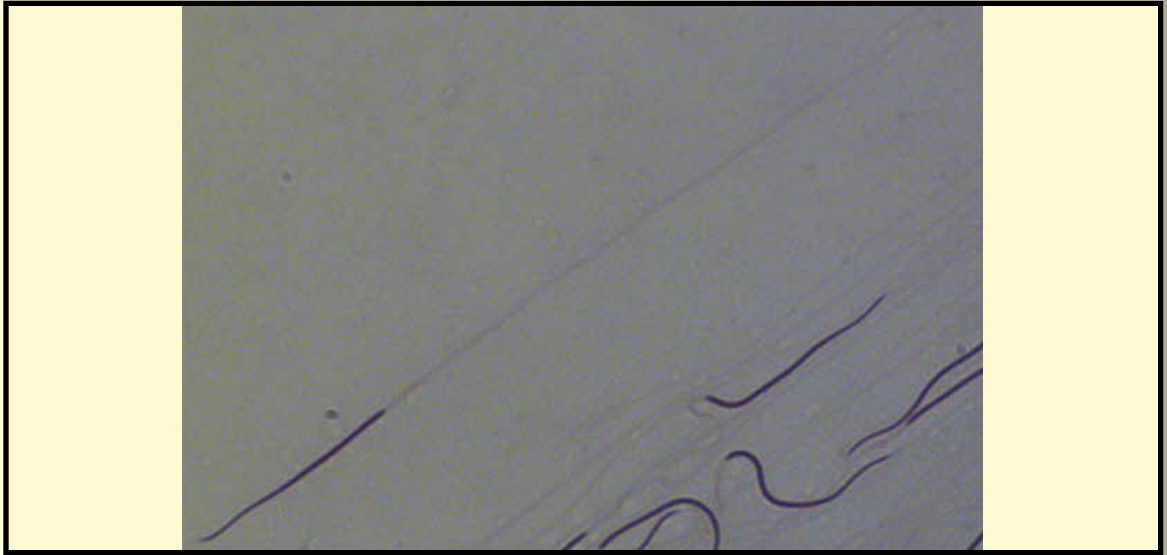


SAN DIEGO ZOO WILDLIFE ALLIANCE SPERM ATLAS

COMMON NAME

Spotted Ratfish

PICTURE



* Pictures are not to scale * All Photos are property of the San Diego Zoo except those credited in the notes

CLASS

Chondrichthyes

ORDER

Chimaeriformes

SUBORDER

FAMILY

Chimaeridae

SUBFAMILY

GENUS

Hydrolagus

SPECIES

Hydrolagus colliei

SUBSPECIES

RP NUMBER

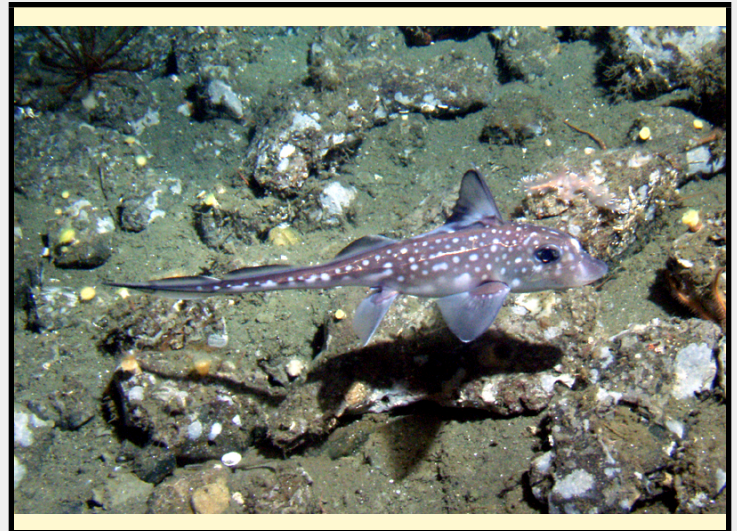
STAIN

Pap

HEAD SHAPE

Helical

ANIMAL PICTURE



MEASUREMENTS (μm)

Head Length

56.42

Head Width

1.50

Midpiece Length

Tail Length

153.00

Measure Total

NOTES

Animal photo credit: Linda Snook MBNMS

Sperm sample from: Birch Aquarium at Scripps

Midpiece could not be discerned from tail therefore tail measurement includes tail and midpiece.